

SELETTI

FURNITURE



SELETTI

Ever since it was established in 1964 in Cicognara, Mantova, SELETTI has pursued its mission of making the most of professionalism, service and above all an endless product research, striving for improvement, innovation and **originality**. The company focuses on design projects and on the creativity which characterises Italian excellence. The collections contain **art** blended with **daily life icons**, objects that send a message of shape and function while **conveying** to its customers the vision for creating a unique, **personal**, fun lifestyle. Today Seletti aims at a new kind of production and daily life, an on-going journey within the idea of beauty.

From a passion for architecture and art comes **Luminaire**; the creative idea of this line was formed during a visit to Salento - a beautiful part of Puglia in southern Italy - where elaborate wooden structures are traditionally fully decorated with thousands of small lights during religious festivals to great visual effect and a reinterpretation of this local tradition is carried into furniture design. **Hybrid**, the tableware collection that unites western with oriental culture has now become a line of incredibly appealing **rugs**, destined to make their appearance all over the home. Also Seletti's **FURNITURE** line is represented by its new collections; **Heritage collection**, a line consisting of furniture "made in Italy" which marries imagination to artisan traditions creating an unusual line of eclectic products with a sophisticated and elegant appearance.

Seletti meets **Studio Job** through an unexpected project that integrates accessible design to the unmistakable style of the creative duo from Antwerp and Amsterdam. The result is **Industry Collection**, a creative and aesthetically valuable furniture collection. Stefano Seletti, art director of the brand, recalls the origins of the project: *"Many years ago we used to import traditional outdoor sets in metal, the typical vintage looking furnishing pieces. My dream was to have them reinterpreted by Studio Job because I thought that their unusual and highly symbolic patterns would be perfect to provide a contemporary touch. And now that dream has come true!"*. Also Studio Job's statement contributes to the introduction of the collection: *"The Industry theme is indeed an icon in our language. For the edgy brand Seletti we've now re-designed this well-known but hyper kitschy garden set using the Industry iconography... Why garden? Well, have you ever seen rock and roll garden furniture? So, here it is! With gas masks, butterflies and many other graphics taken from the Studio Job archives"*. The outcome of this collaboration is the original set of chairs, armchairs, round and oval tables made of cast aluminum, available in different colors, and **the new rubber cushion**. Industry collection pieces are designed to facilitate transportation, thanks to the light-weighted material and their easy to disassemble nature. Thanks to the inspiring collaborations along with the brand's continuously creative attitude, Seletti furniture takes shape with unusual interpretations and interesting intuitions.

NEW!

◀ CHAIR

LONGCHAIR ▶

NEW!

ALL THE FABRICS ARE INTERCHANGEABLE ↓





HERITAGE COLLECTION | Chairs & coffee tables



Deckchair | HERITAGE COLLECTION

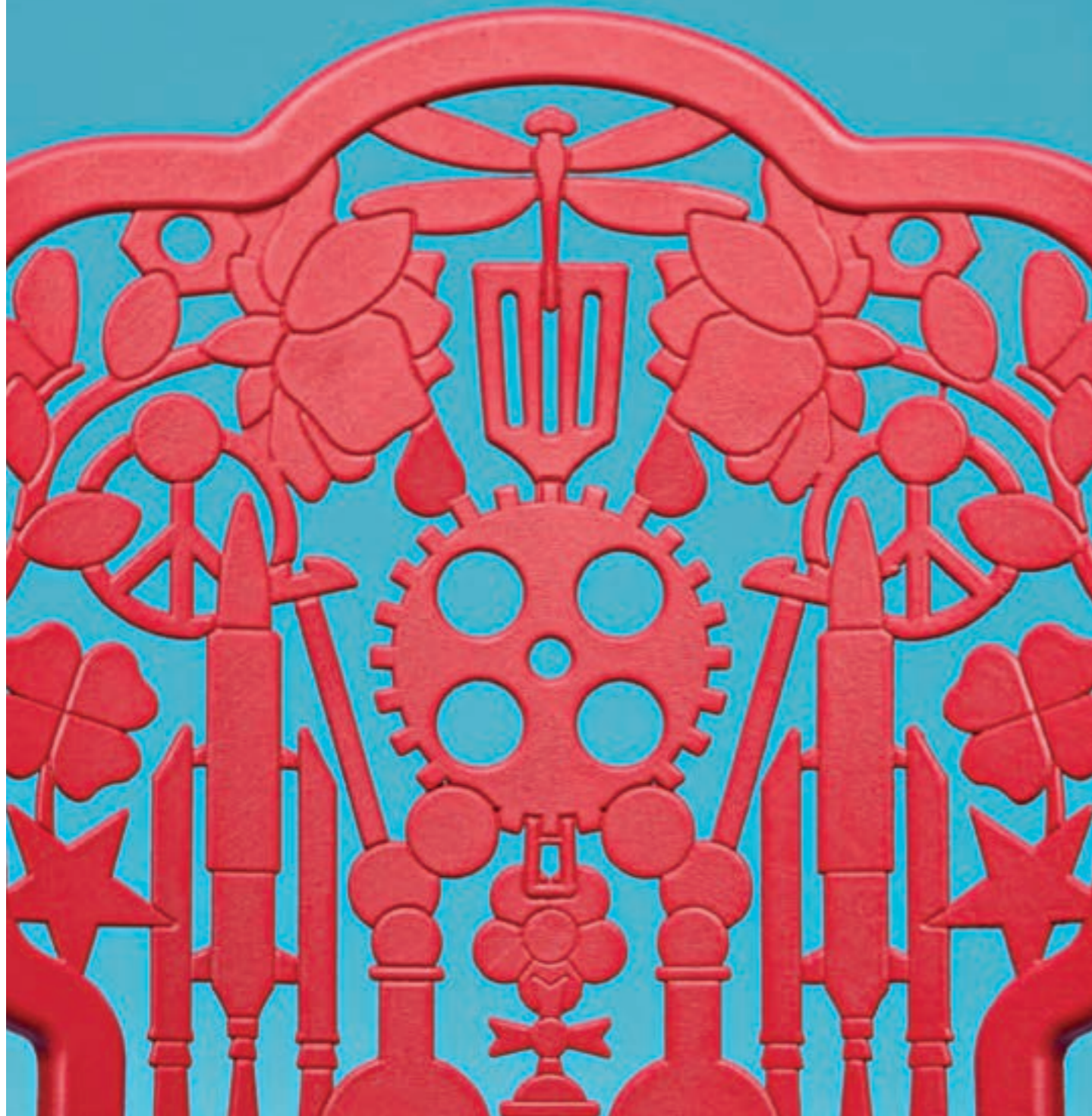


LUMINAIRE | Mirrors (Large, medium & small)



Small mirror/headboard | LUMINAIRE

Industry Collection







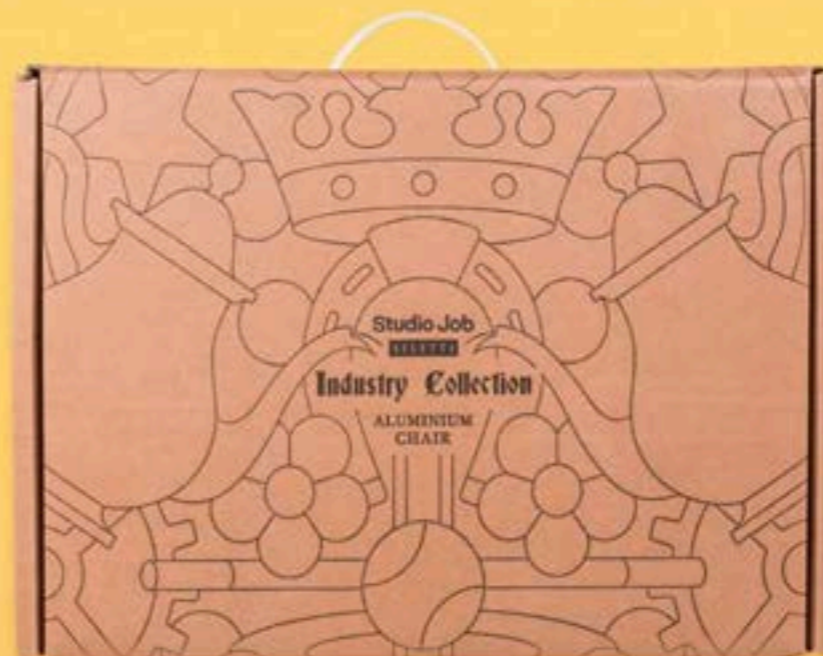
INDUSTRY COLLECTION | Rubber cushions



Rubber cushions | INDUSTRY COLLECTION



INDUSTRY COLLECTION | Armchair



Disassembled chair | INDUSTRY COLLECTION

NEW!



⌞ ALL RUGS 100% MADE WITH RECYCLED PET



OPTIONAL MIRRORS TO PUT
ON BACK OR ON SIDES ↓





ASSEMBLAGE | Set 8 lacquered modules











EXPORT COMÓ | Crate/furniture in wood with baroque bases and/or wheels 30



Pallet furniture | SI - PALLET 31



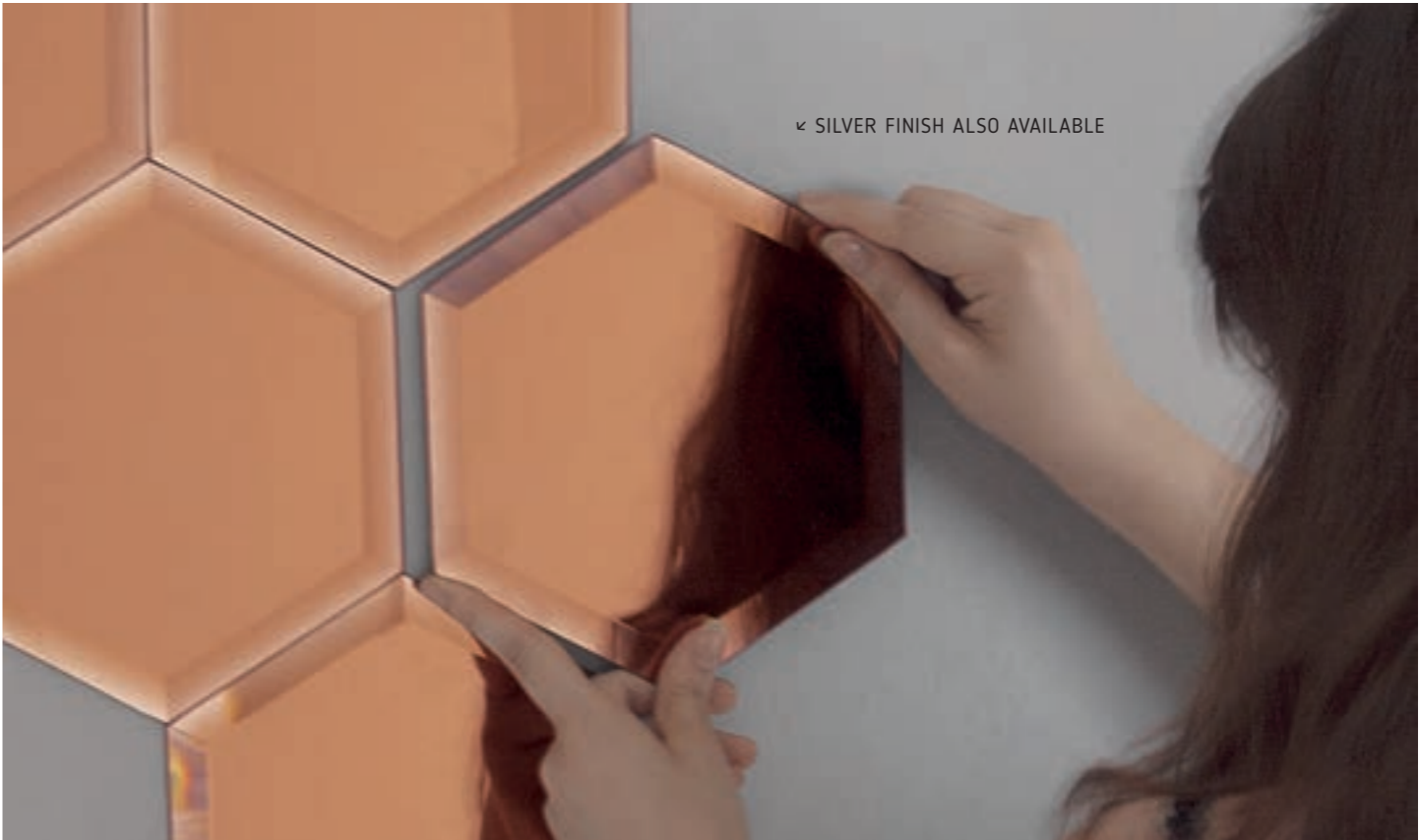
ROCK_ME | Rocking chair



Coat stand | HARAKIRI



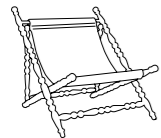
MIRRORIZED | Mirrored tiles



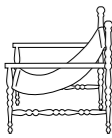
- page 4 -

HERITAGE
COLLECTION

Design: Sebastiano Tosi
Material: Turned beech wood,
velvet, polyester



Foldable deckchair
cm. 75 x 88 h. 77 ≈
29.5" x 34.6" h. 30.3" ≈
_16060 black
_16061 white

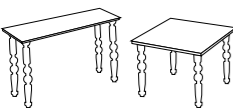


Armchair
cm. 66 x 77 h. 81 ≈
25.9" x 30.3" h. 31.9" ≈
_16062 black
_16063 white



Chair
cm. 55 x 56 h. 90 ≈
21.6" x 22" h. 35.4" ≈
_16064 black
_16065 white

Fabrics available for all the
models - sold separately
_powder pink - velvet
_blue - velvet
_green - velvet
_bordeaux - velvet
_flower - polyester, outdoor proof



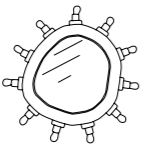
Coffe Table _16070
cm. 40 x 40 h. 30 ≈
15.8" x 15.8" h. 11.8" ≈
White / Black

Coffe Table _16071
cm. 25 x 65 h. 40 ≈
9.8" x 25.6" h. 15.7" ≈
White / Black

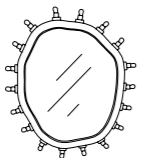
- page 8 -

LUMINAIRE

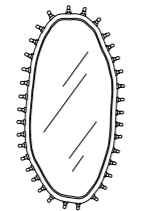
Design: Marcantonio Raimondi
Malerba
Material: MDF, mirror



Small mirror with bulbs _14790
cm. 30 x 32 ≈ - 11.8" x 12.6" ≈

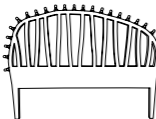


Medium mirror with bulbs _14791
cm. 55 x 67 ≈ - 21.7" x 26.4" ≈



Large mirror with bulbs _14792
cm. 72 x 150 ≈ - 28.4" x 59.1" ≈

Material: MDF



Headboard with bulbs _14793
cm. 170 x 121 ≈ - 66.9" x 47.6" ≈

- page 10 -

INDUSTRY
COLLECTION

Design: Studio Job
Material: Cast aluminium with matt
powder coating finishing, outdoor
proof



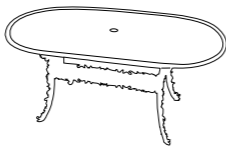
Chair
cm. 40x40 h. 45/92 ≈
15.8"x15.8" h. 17.7"/36.2" ≈
White _18686_BIA
Black _18686_NER
Red _18686_ROS
Green _18686_VER



Armchair
cm. 52 x 55 h. 45/94 ≈
20.5" x 21.7" h. 17.7"/37" ≈
White _18684_BIA
Black _18684_NER
Red _18684_ROS
Green _18684_VER



Round table
ø cm. 70 h. 74 ≈ - ø 27.6" h. 29.1" ≈
White _18687_BIA
Black _18687_NER
Red _18687_ROS
Green _18687_VER



Oval table
cm. 152x90 h. 74 ≈
59.8"x35.4" h. 29.1" ≈
White _18688_BIA
Black _18688_NER
Red _18688_ROS
Green _18688_VER

- page 14 -

Material: Rubber



Cushion for chair
ø cm. 31 ≈ - ø 12.2" ≈
_18686CBIA white
_18686CNER black
_18686CROS red
_18686CVER green

Cushion for armchair
cm. 37x38 ≈ - 14.6"x15" ≈
_18684CBIA white
_18684CNER black
_18684CROS red
_18684CVER green

- page 18 -

HYBRID RUGS

Design: Ctrlzak
Material: front 100% Polyester,
back 50% Cotton, 50% Polyester



Perinzia
Round rug _18100
ø cm. 215 ≈ - ø 84.7" ≈



Tecla
Round rug _18101
ø cm. 215 ≈ - ø 84.7" ≈



Andria
Round rug _18102
ø cm. 215 ≈ - ø 84.7" ≈

- page 20 -

RENAISSANCE

Design: BBMDS
Material: MDF



**Modular bookcase
Module A**
cm. 40 x 34 h. 40 ≈
15.8" x 13.4" h. 15.8" ≈
White _14903
Anthracite _14902



**Modular bookcase
Module B**
cm. 80 x 34 h. 40
31.5" x 13.4" h. 15.8" ≈
White _14908
Anthracite _14907

RENAISSANCE
MIRRORS

Design: BBMDS
Material: Glass

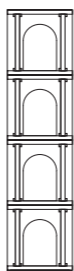


**Shaped mirror set, 2 pieces
with bronze finishing** _17490
cm. 22 x 30,5 ≈
8,6" x 12" ≈

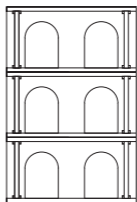
POSSIBLE MODULAR
COMBINATIONS



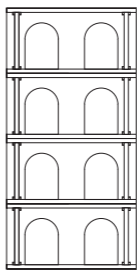
3 pcs MODULE A



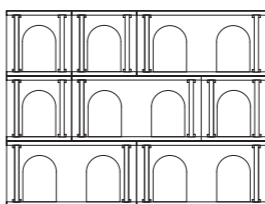
4 pcs MODULE A



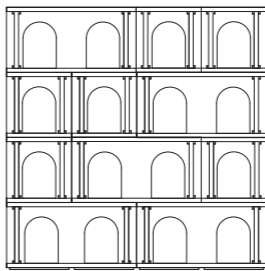
3 pcs MODULE B



4 pcs MODULE B



4 pcs MODULE A
+ 4 pcs MODULE B

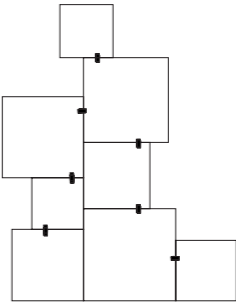


6 pcs MODULE A
+ 5 pcs MODULE B

- page 22 -

ASSEMBLAGE

Design: Selab
Material: MDF



**Modular bookcase, 8 modules,
with 8 clamps**
from cm. 28,5 to cm. 60
- depth cm. 35 ≈
from 11.2" to 23.6"
- depth 13.8" ≈
White _14911
Anthracite _14910

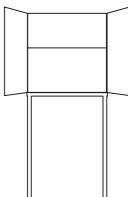


CLAMP

- page 26 -

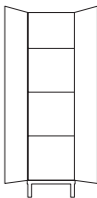
LES
VOLIÈRES

Design: Cristina Celestino
Material: Metal, glass



Mesh cabinet with shelves
White _14686
cm. 71 x 36 h. 164 ≈
28" x 14.2" h. 64.6" ≈

Mesh cabinet with shelves
Black _14684
cm. 71 x 36 h. 164 ≈
28" x 14.2" h. 64.6" ≈



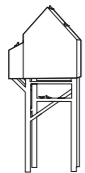
Mesh cabinet with shelves
White _14682
cm. 40 x 40 h. 164 ≈
15.8" x 15.8" h. 64.6" ≈

Mesh cabinet with shelves
Black _14680
cm. 40 x 40 h. 164 ≈
15.8" x 15.8" h. 64.6" ≈

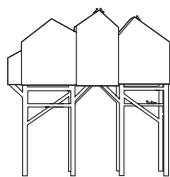
- page 27 -

PALAFITT

Design:
Marcantonio Raimondi Malerba
Material: MDF, beech



2 doors furniture _14996
cm. 64 x 36 h. 157,5 ≈
25.2"x14.2" h. 62" ≈



4 doors furniture _14998
cm. 161 x 38 h. 164 ≈
63.4"x14.9" h. 64.6" ≈

- page 28 -

SENDING ANIMALS

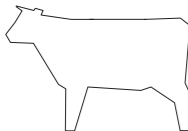
Design:
Marcantonio Raimondi Malerba
Material: Wood



Sending Goose _16365
cm. 65 x 38,5 h. 66 ≈
25.6" x 15.2" h. 26" ≈



Sending Pig _16366
cm. 150 x 44 h. 76 ≈
59.1" x 17.3" h. 29.9" ≈

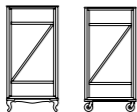


Sending Cow _16367
cm. 225 x 58 h. 151 ≈
88.6" x 22.8" h. 59.5" ≈

- page 30 -

EXPORT COMÓ

Design:
Marcantonio Raimondi Malerba
Material: Wood



Wardrobe
cm. 100 x 55 h. 202,5 ≈
39.4" x 21.7" h. 79.7" ≈
Base _16385
Wheels _16395



2 doors cupboard with internal shelf
cm. 120 x 55 h. 95 ≈
47.2" x 21.7" h. 37.4" ≈
Base _16387
Wheels _16397



1 door downside opening TV cabinet with 3 internal shelves
cm. 160 x 45 h. 65,5 ≈
63" x 17.7" h. 25.8" ≈
Base _16386
Wheels _16396



2 doors TV cabinet with 2 drawers
cm. 160 x 45 h. 65,5 ≈
63" x 17.7" h. 25.8" ≈
Base _16383
Wheels _16393



Chest of 3 drawers
cm. 120 x 55 h. 95 ≈
47.2" x 21.7" h. 37.4" ≈
Base _16384
Wheels _16394

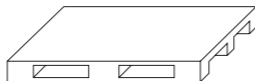


Bedside table
cm. 42 x 38 h. 60,5 ≈
16.5" x 15" h. 23.8" ≈
Base _16382

- page 31 -

SI-PALLET

Design: Selab
Material: MDF



Furniture pallet with single shelf
cm. 60 x 80 h. 14 ≈
23.6" x 31.5" h. 5.5" ≈
White _12738
Grey _12738GRI

Furniture pallet with single shelf
cm. 120 x 80 h. 14 ≈
47.2" x 31.5" h. 5.5" ≈
White _12739
Grey _12739GRI

- page 32 -

ROCK_ME

Design: Alessandra Baldereschi
Material: Wood



Rocking chair
cm. 54 x 92 h. 82 ≈
21.3" x 36.2" h. 32.3" ≈
White / Powder pink _09506_CIP
White / Light blue _09506_CEL

- page 33 -

HARAKIRI

Design: Alessandro Zambelli
Material: Beech wood

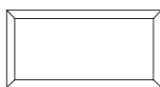


Cloack stand
h. cm. 192 ≈ - h. 75.6" ≈
Natural _13288NAT
Red _13288ROS
White _13288BIA
Black _13288NER

- page 34 -

MIRRORIZED

Design: Selab
Material: Glass



Mirror tile
cm. 30 x 15 - 11" x 5.9" ≈
17479_ Smoky Grey



Mirror tile
cm. 20 x 20 - 9" x 9" ≈
17476_Silver
17477_Smoky Grey

SELETTI

FURNITURE 2017

Art Direction : Sebastiano Mastroeni, Ivan Piperis

Design: Sebastiano Mastroeni, Ivan Piperis

Production: Badini Createam

Photography: Silvia Donghi

except pages: cover, 10, 12-13, 16, 17, 22-23, 24-25

Leonardo Scotti

and except pages: 26 (bottom - top left), 27, 28, 29, 30 (bottom), 31, 32, 33, 34, 35

Badini Createam

and except pages: 26 (top right), 30 (top)

Walter Borghetti

SELETTI S.p.A.

Via Codebruni Levante, 32
46019 Cicognara di Viadana
(MN) Italy

www.seletti.it

Tel. +39 0375 88561

Fax +39 0375 88843

P.Iva 01221790205

info@seletti.it

ITALY SALES:

venditeitalia@seletti.it

EXPORT SALES:

export@seletti.it

ASIA SALES:

asiasales@seletti.it

NORTH AMERICA SALES:

info@seletti.us

PR & COMMUNICATION:

pr@seletti.it

PRESS:

press@seletti.it

Technical characteristics, sizes and illustrations shown in this catalogue are subject to change without prior notice.

