

# *Ethnicraft*

ACCESSORIES



COLLECTION 2020

*We create the foundations of your home,  
to inspire the stories of your life.*

For the past 25 years, we have been creating timeless furniture and accessories manufactured from quality materials. True to our values, we have maintained our goal to produce good design, distinguished by authenticity, simplicity and quality, as well as creativity and innovation. We rely on our unique expertise to create singular designs ready to embellish your daily life durably. We create collections for every room of the house: from the furniture that defines the purpose of a space to the objects that layer it with meaning. Nothing excites us more than seeing how people love and use our products in the story of their lives.

All of our designs are intentionally timeless. They withstand trends and associate well with different styles, and they can be passed on from one home to the next, carrying over the stories of one lifetime into another.



10	LOOKBOOK
68	TRAYS
106	PERFECT COMBINATION
112	TRAY TABLES
118	SIDE TABLES
126	WALL DECOR
136	HOME TEXTILES
152	CARE INSTRUCTIONS





ICONS YOU MIGHT COME ACROSS  
IN OUR PRODUCT CATALOGUE

- O** OILED  
The items marked with this icon are finished with a natural oil.  
Visit page 153 for more information on how to take care of our oiled furniture.
- V** VARNISHED  
The items marked with this icon are finished with varnish.  
Visit page 153 for more information on how to take care of our varnished furniture.
- B** BRUSHED  
The items marked with this icon are brushed. This finishing gives our furniture more depth. The rougher surface highlights the grain of the wood.
- C** CONTRACT GRADE  
The items marked with this icon are EN and/or BIFMA certified.

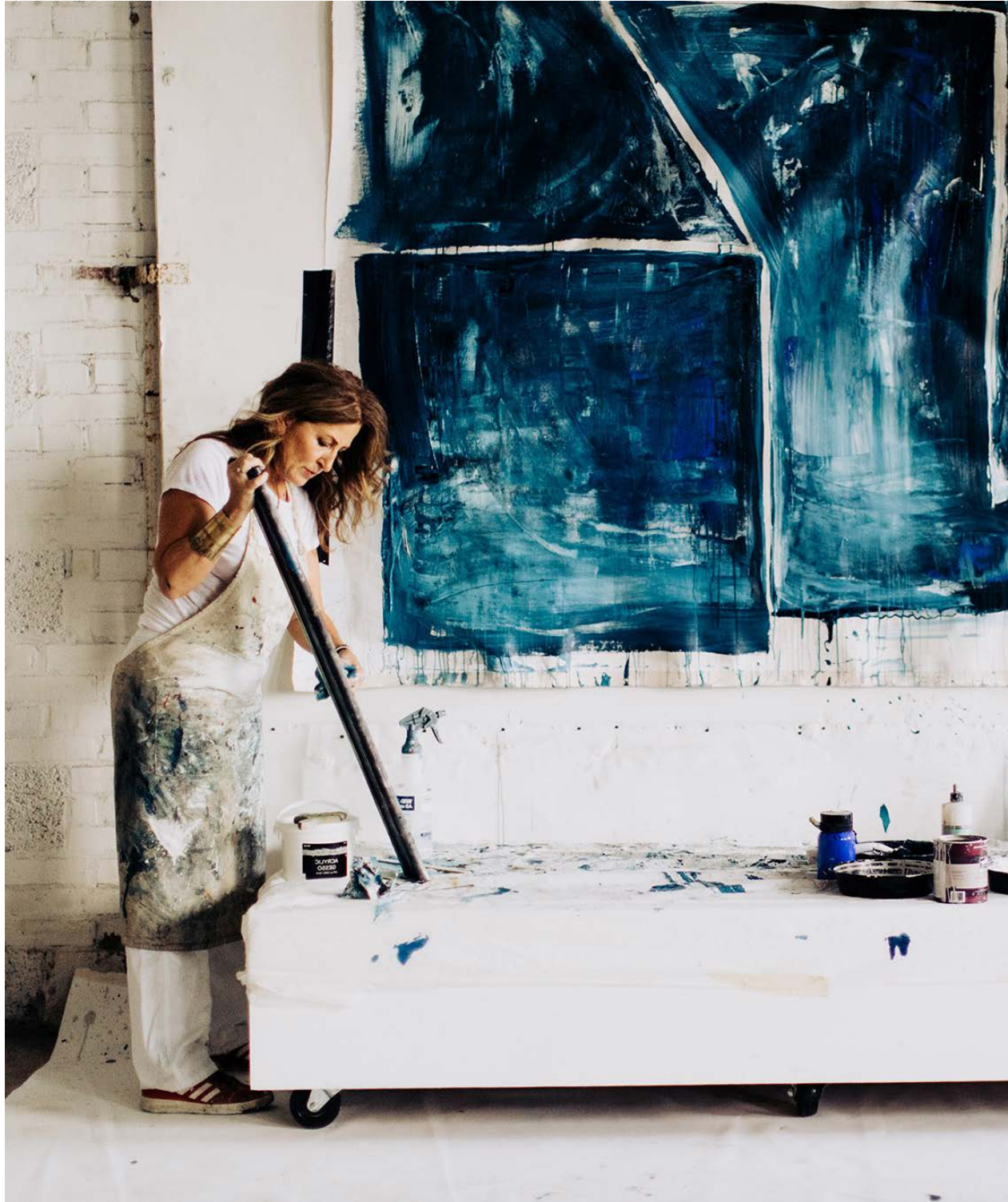
**100 %** SOLID WOOD  
The items marked with this icon are 100% made out of solid wood.

**FSC®** FOREST STEWARDSHIP COUNCIL  
The items marked with this icon carry the FSC® 100% label.  
Visit page 157 for more information on the organization that promotes responsible management of the world’s forests.



Please refer to our website for more information:  
[www.ethnicraft.com](http://www.ethnicraft.com)



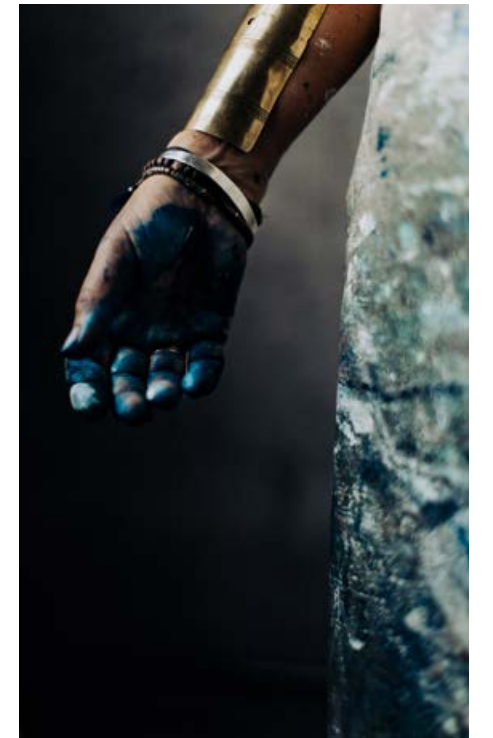


Designer

## DAWN SWEITZER

The start of a new year is an exciting time filled with goals, dreams and new beginnings. In 2020, this is especially true for Ethnicraft. This year we are officially merging with longtime partner and lifestyle brand Notre Monde. Together, we will keep doing what we do best: creating timeless furniture and sophisticated accessories. United as one, under the Ethnicraft name.

Notre Monde's beloved designer Dawn Sweitzer will be the main artistic mind behind the accessories. From her childhood in Ohio's great outdoors, her curiosity for life and her many travels around the globe, Dawn has collected images and sensations, which she now channels into her work as an artist without limitations. Her multiple inspirations have given rise to extremely rich pictorial compositions, based on abstract, complex and modern patterns, arranged into combinations and successive layers interacting with materials, colors, textures and finishes. Today, the artist uses her spacious studio, located in High Point, North Carolina, as a playground where she is free to experiment different techniques and explore a variety of mirrors, tables and home textiles for the Ethnicraft collection.







## TRAYS

Inspired by fresh ideas of global origin, we have created a sophisticated and subtle collection of trays. Luxury is melded with practicality, in the spirit of decorative objects. Global patterns, textures and layers are translated onto our pieces with traditional printing and hand-finishing techniques. The exceptional process contributes to the unique quality and authenticity of each tray. Whether you use them to serve drinks, or as exclusive pieces of art on the wall: the trays are sure to catch the eye.





## URBAN GEOMETRY



## WABI SABI





## TRANSLUCENT SILHOUETTES





*The mingling of lavish gold with cool indigo in rich patterns  
creates a fluid balance between the masculine and feminine,  
aptly capturing the sumptuous movement of fabric.*

## TRIBAL QUEST







## CLASSICS





## VALET TRAYS

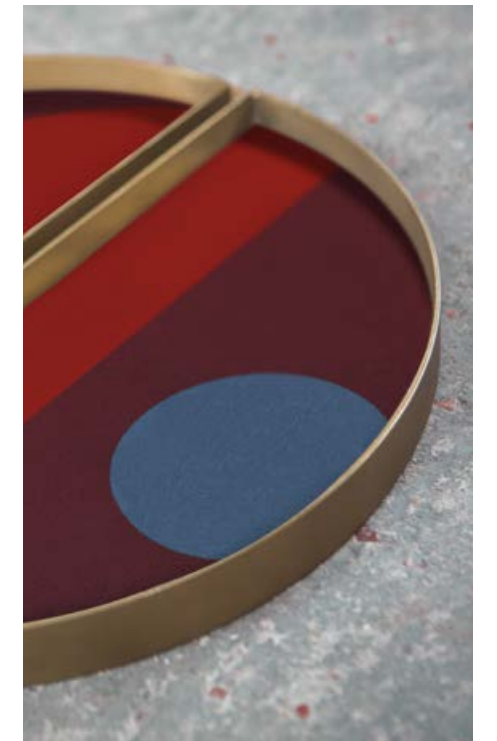
Despite its small size, the valet tray packs a lot of patterns and textures into its small frame. Its compact size allows for versatility, making it perfect for serving up a drink or a snack, as a key holder, jewelry tray, ...

These small trays can be a colorful accent anywhere in the house. From the hallway to the bathroom or your coffee table, there's always room to add a small, glamorous and colorful touch.



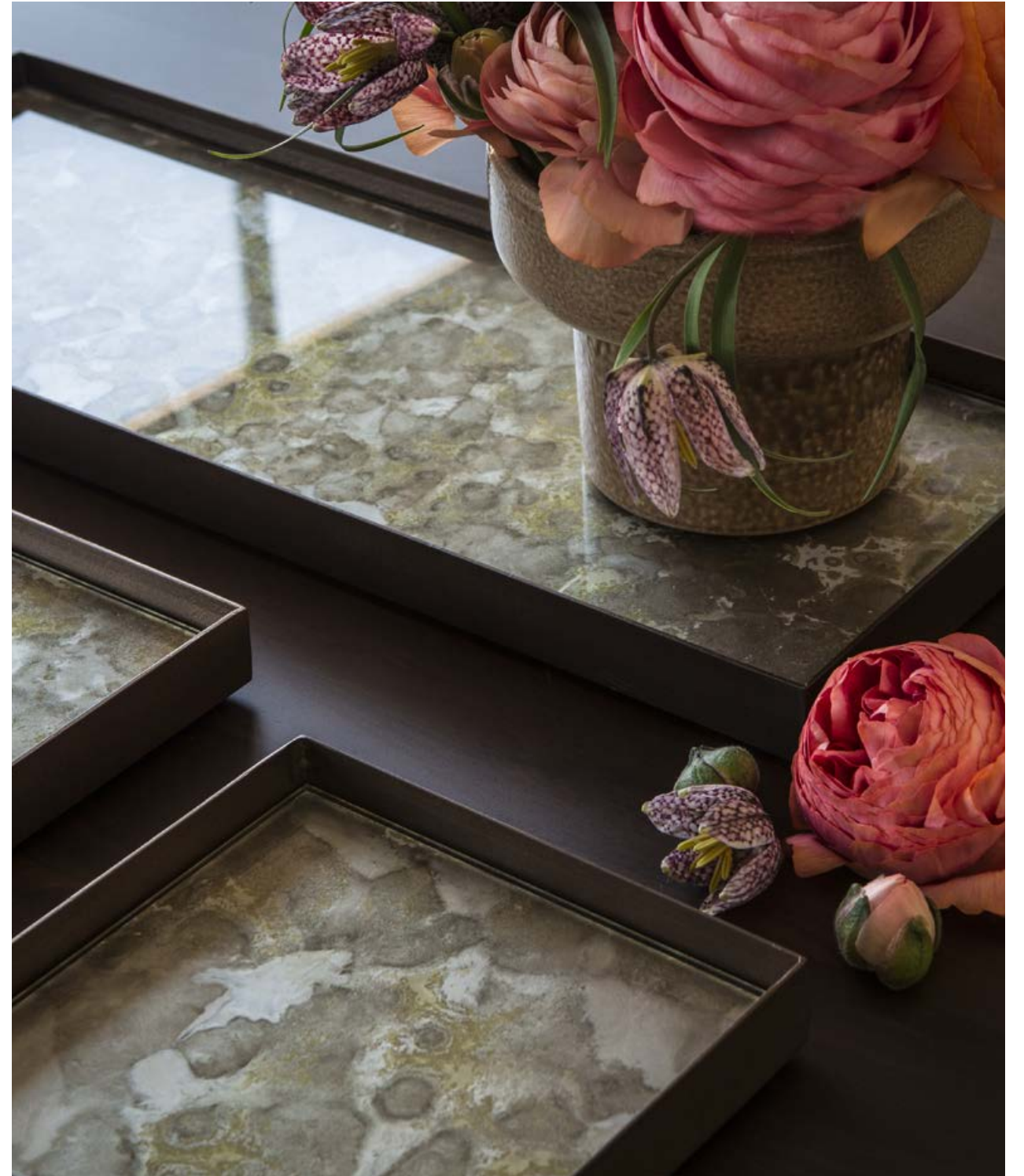








*Placed in the hallway, it is a key holder. In the bathroom,  
it is a jewelry tray. On the coffee table, it is a decorative item.  
Anywhere in the house, it is a stylish accent piece.*







## TRAY TABLES

The tray table's ability to adopt different trays allows you to mix or match various colors and patterns, creating a personal piece that is uniquely yours. That way, you can easily change its look whenever you want. While it may serve its function as a table, the versatile piece also transforms into a moveable singular tray when removed from its structure. Beautiful and convenient.







## THE PERFECT COMBINATION

Create a table that is uniquely yours by choosing one of our favorite tray combinations or by selecting your own matching pair of trays.







## SIDE TABLES

Our side tables are like so many things in life: it's all in the detail. They are highly versatile and can also be used in the bedroom where they make wonderful nightstands.





GEOMETRIC SIDE TABLE







NESTING SIDE TABLE



## BOK SIDE TABLE







**COVE** SIDE TABLE



**TRIPOD** SIDE TABLE



*“Your environment should be luxurious, filled with the true beauty of the people and things that inspire you”*

- Dawn Sweitzer, designer.



COMPACT SIDE TABLE





# WALL DECOR

From an elegant aged mirror that doubles as art to sleek wooden shelves: we provide the perfect finishing touches to tie any room together. Hang our pieces on their own or display a number of them in your space to make a bold statement.





## AGED MIRRORS







**FRAMELESS** MIRRORS







U SHELF



WALL SHELF



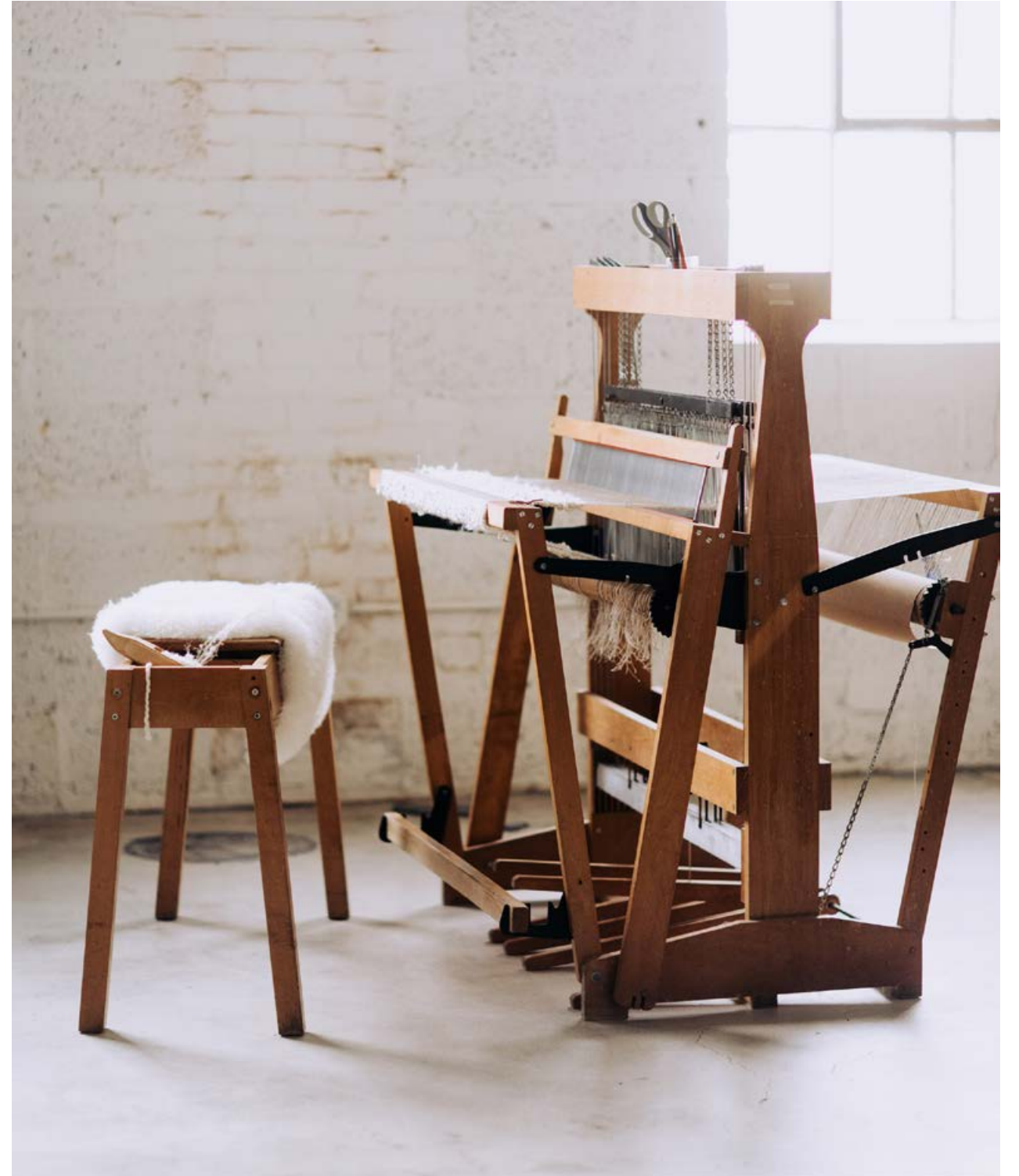


## HOME TEXTILES

Manufactured in a Belgian family-owned weaving mill, this first collection named “Refined Layers” consists of cushions and throws featuring abstract patterns for an understated and original look. They are manufactured from Jacquard fabrics woven mainly from cotton, linen and wool, which blend together to create a play on textures and assorted shaded tones. Mix and match freely with this plush and cozy collection.



*Our cushion covers and throws are crafted from the best weaving yarns which are primarily produced in Belgium, France, Italy and Peru. By consciously choosing natural fibers - such as cotton, wool and Belgian linen - we stay true to our values: design pieces full of character, made from quality materials that age beautifully.*





## REFINED LAYERS





*“For this collection, I wanted to achieve a sense of balance  
between a modern, uncluttered style and  
my own bohemian and refined influences.”*

- Dawn Sweitzer, designer.

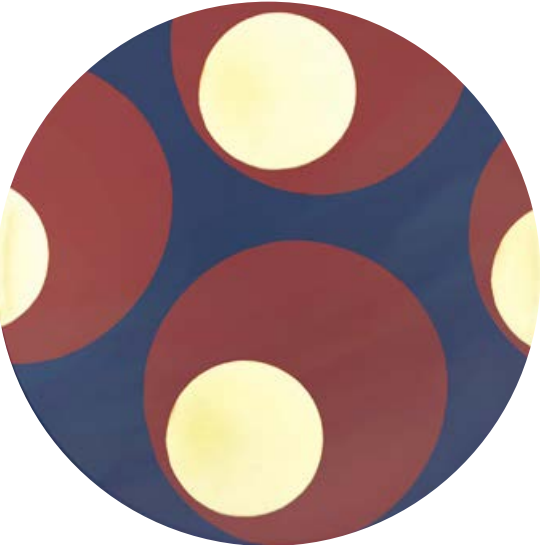






## PRODUCT OVERVIEW

For more detailed product information,  
visit our website [www.ethnicraft.com](http://www.ethnicraft.com)



URBAN GEOMETRY COLLECTION

GRAPHITE CHEVRON  
DRIFTWOOD TRAY

**SMALL**  
20932    48 × 48 × 4 CM  
19" × 19" × 1,6"



TURKISH DOTS  
GLASS TRAY

**SMALL**  
20933    48 × 48 × 4 CM  
19" × 19" × 1,6"



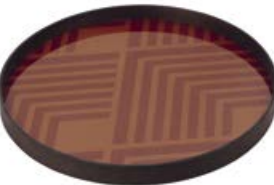
MIDNIGHT CHEVRON  
GLASS TRAY

**LARGE**  
20934    61 × 61 × 4 CM  
24" × 24" × 1,6"



ORANGE CHEVRON  
GLASS TRAY

**LARGE**  
20935    61 × 61 × 4 CM  
24" × 24" × 1,6"







FOLK  
DRIFTWOOD TRAY

**LARGE**  
20936 61 × 61 × 4 CM  
24" × 24" × 1,6"



SLATE CURVES  
DRIFTWOOD TRAY

**LARGE**  
20940 61 × 46 × 5 CM  
24" × 18" × 2"



ASYMMETRIC DOT  
DRIFTWOOD TRAY

**XL**  
20937 92 × 92 × 4 CM  
36" × 36" × 1,6"



GEO STUDY  
DRIFTWOOD TRAY

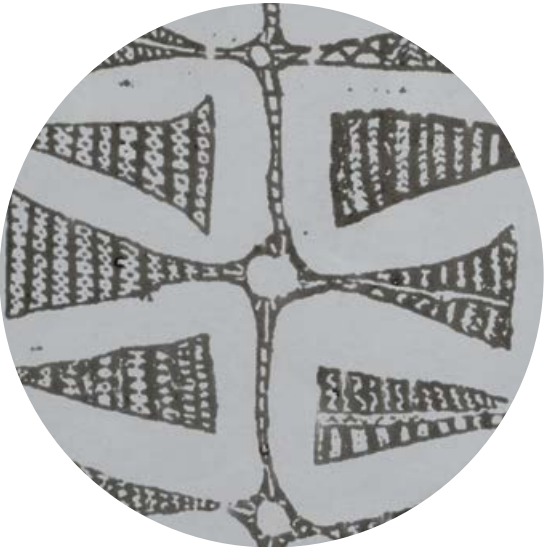
**SMALL**  
20938 46 × 36 × 4 CM  
18" × 14" × 1,6"





GRAPHITE CURVES  
DRIFTWOOD TRAY

**MEDIUM**  
20939 69 × 31 × 5 CM  
27" × 12" × 2"



GRAPHITE BOHEMIAN  
GLASS TRAY

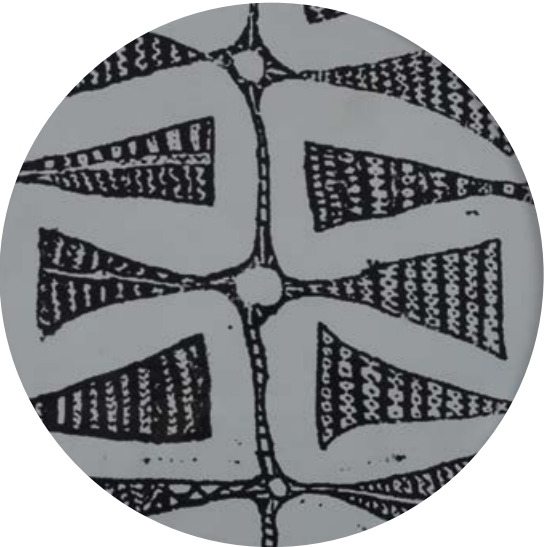
**SMALL**  
20458 48 × 48 × 4 CM  
19" × 19" × 1,6"



WABI SABI COLLECTION

SLATE WABI SABI  
GLASS TRAY

**MEDIUM**  
20465 69 × 31 × 5 CM  
27" × 12" × 2"



DARK BOHEMIAN  
GLASS TRAY

**LARGE**  
20460 61 × 61 × 4 CM  
24" × 24" × 1,6"







SAND WABI SABI

GLASS TRAY

**SMALL**

20459 48 × 48 × 4 CM  
19" × 19" × 1,6"



GRAPHITE WABI SABI

GLASS TRAY

**XL**

20462 92 × 92 × 4 CM  
36" × 36" × 1,6"



SLATE WABI SABI

GLASS TRAY

**LARGE**

20461 61 × 61 × 4 CM  
24" × 24" × 1,6"



SAND WABI SABI

GLASS TRAY

**SMALL**

20463 46 × 36 × 4 CM  
18" × 14" × 1,6"





GRAPHITE WABI SABI  
GLASS TRAY

**LARGE**  
20464 61 × 46 × 5 CM  
24" × 18" × 2"



SILVER DOTS  
GLASS TRAY

**SMALL**  
20441 46 × 36 × 4 CM  
18" × 14" × 1,6"



TRANSLUCENT SILHOUETTES  
COLLECTION

SIENNA DOTS  
GLASS TRAY

**MEDIUM**  
20442 69 × 31 × 5 CM  
27" × 12" × 2"



SIENNA LAYERED DOTS  
GLASS TRAY

**LARGE**  
20443 61 × 46 × 5 CM  
24" × 18" × 2"







## CONNECTED DOTS

GLASS TRAY

### SMALL

20438 48 × 48 × 4 CM  
19" × 19" × 1,6"



## SLATE LAYERED DOTS

GLASS TRAY

### LARGE

20440 61 × 61 × 4 CM  
24" × 24" × 1,6"



## PINOT LAYERED DOTS

GLASS TRAY

### SMALL

20437 48 × 48 × 4 CM  
19" × 19" × 1,6"



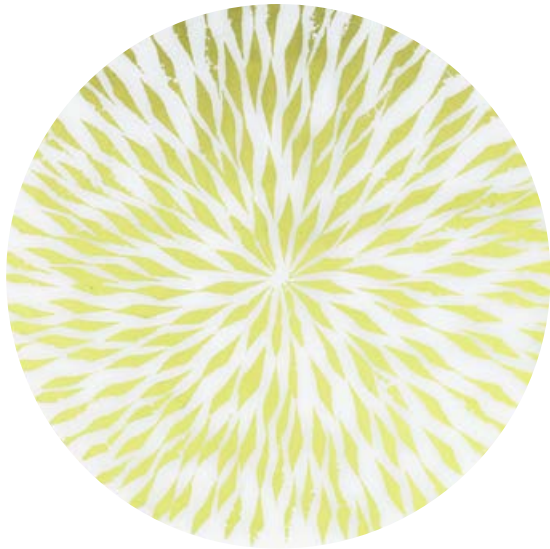
## OVERLAPPING DOTS

GLASS TRAY

### LARGE

20439 61 × 61 × 4 CM  
24" × 24" × 1,6"

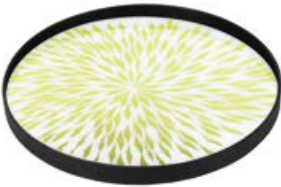




GILDED LAYERS COLLECTION

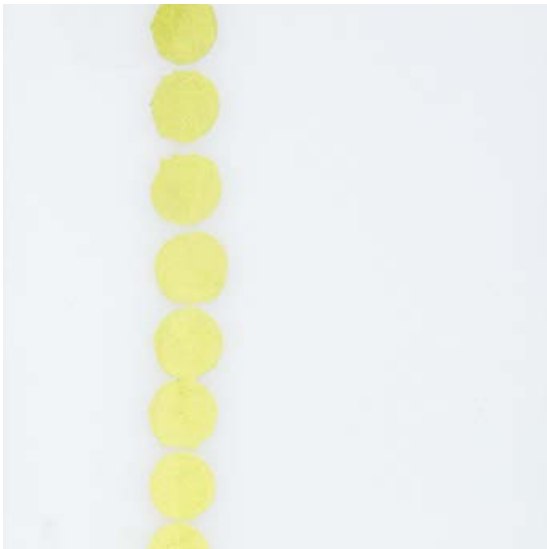
DAHLIA  
GLASS TRAY

**LARGE**  
20421 61 × 61 × 4 CM  
24" × 24" × 1,6"



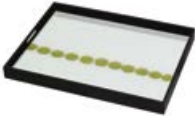
GOLD DOTS  
GLASS TRAY

**SMALL**  
20417 48 × 48 × 4 CM  
19" × 19" × 1,6"



DOTTED LINE  
GLASS TRAY

**SMALL**  
20422 46 × 36 × 4 CM  
18" × 14" × 1,6"

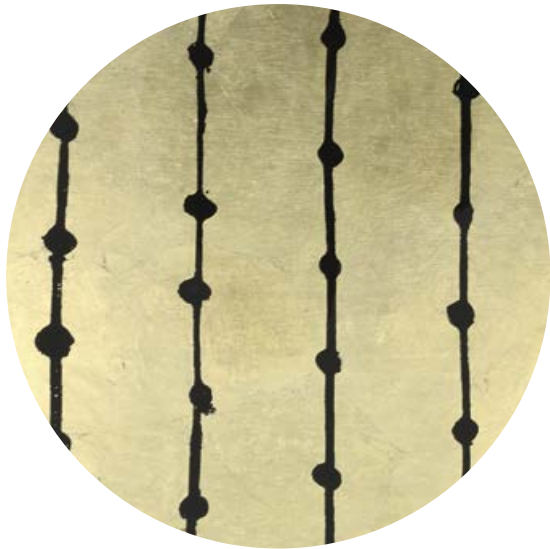


GOLD AND BLUE HALOS  
GLASS TRAY

**LARGE**  
20424 61 × 46 × 5 CM  
24" × 18" × 2"





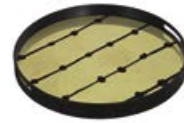


## BROWN DOTS

GLASS TRAY

### SMALL

20418 48 × 48 × 4 CM  
19" × 19" × 1,6"



## BRIGHT ABSTRACT COLLECTION

### RASPBERRY ABSTRACT

GLASS TRAY

### SMALL

20451 48 × 48 × 4 CM  
19" × 19" × 1,6"



## TURQUOISE ABSTRACT

GLASS TRAY

### SMALL

20452 48 × 48 × 4 CM  
19" × 19" × 1,6"



### RASPBERRY LANDSCAPE

GLASS TRAY

### LARGE

20453 61 × 61 × 4 CM  
24" × 24" × 1,6"





CLASSICS COLLECTION

BRONZE SLICE  
MIRROR TRAY

**LARGE**  
20407 61 × 61 × 4 CM  
24" × 24" × 1,6"



WHITE SLICE  
DRIFTWOOD TRAY

**SMALL**  
20305 48 × 48 × 4 CM  
19" × 19" × 1,6"



**XL**  
20378 92 × 92 × 4 CM  
36" × 36" × 1,6"



BLACK SLICE  
DRIFTWOOD TRAY

**XL**  
20379 92 × 92 × 4 CM  
36" × 36" × 1,6"

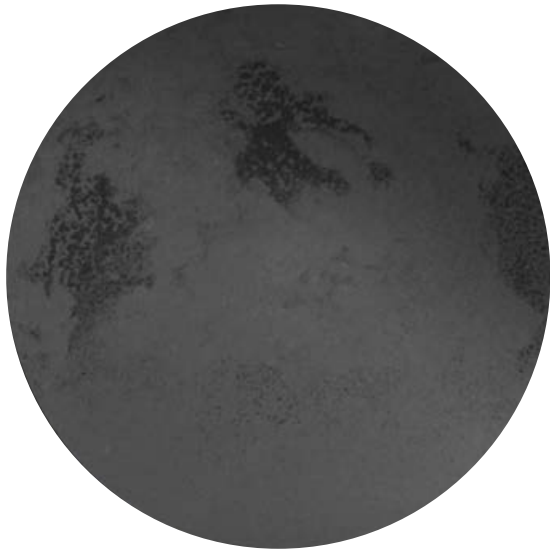


SLICE  
LIGHT AGED MIRROR TRAY

**SMALL**  
20402 48 × 48 × 4 CM  
19" × 19" × 1,6"







CHARCOAL MIRROR  
HEAVY AGED MIRROR TRAY

**SMALL**  
20450 48 × 48 × 4 CM  
19" × 19" × 1,6"



CLEAR MIRROR  
HEAVY AGED MIRROR TRAY

**SMALL**  
20301 48 × 48 × 4 CM  
19" × 19" × 1,6"



**LARGE**  
20315 61 × 61 × 4 CM  
24" × 24" × 1,6"



BRONZE MIRROR  
HEAVY AGED MIRROR TRAY

**SMALL**  
20403 48 × 48 × 4 CM  
19" × 19" × 1,6"



**XL**  
20331 92 × 92 × 4 CM  
36" × 36" × 1,6"



**SMALL**  
20316 46 × 36 × 4 CM  
18" × 14" × 1,6"



**MEDIUM**  
20356 69 × 31 × 5 CM  
27" × 12" × 2"



**LARGE**  
20317 61 × 46 × 5 CM  
24" × 18" × 2"





WHITE TREE  
DRIFTWOOD TRAY

**LARGE**  
20303 61 × 61 × 4 CM  
24" × 24" × 1,6"



BLOSSOM  
DRIFTWOOD TRAY

**SMALL**  
20335 48 × 48 × 4 CM  
19" × 19" × 1,6"



BLACK TREE  
DRIFTWOOD TRAY

**LARGE**  
20404 61 × 61 × 4 CM  
24" × 24" × 1,6"



MIST GOLD ORGANIC  
GLASS TRAY

**SMALL**  
20361 48 × 48 × 4 CM  
19" × 19" × 1,6"







BLACK MARRAKESH  
DRIFTWOOD TRAY

**LARGE**  
20436 61 × 61 × 4 CM  
24" × 24" × 1,6"



MOROCCAN FROST  
LIGHT AGED MIRROR TRAY

**LARGE**  
20310 61 × 61 × 4 CM  
24" × 24" × 1,6"



WHITE MARRAKESH  
DRIFTWOOD TRAY

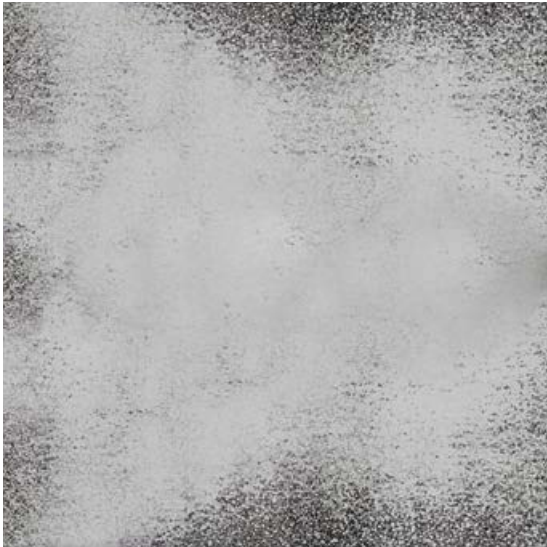
**LARGE**  
20336 61 × 61 × 4 CM  
24" × 24" × 1,6"



GATE  
MEDIUM AGED MIRROR TRAY

**MEDIUM**  
20430 69 × 31 × 5 CM  
27" × 12" × 2"





FROST  
HEAVY AGED MIRROR TRAY

**MEDIUM**  
20366 69 × 31 × 5 CM  
27" × 12" × 2"



INDIGO ORGANIC  
GLASS TRAY

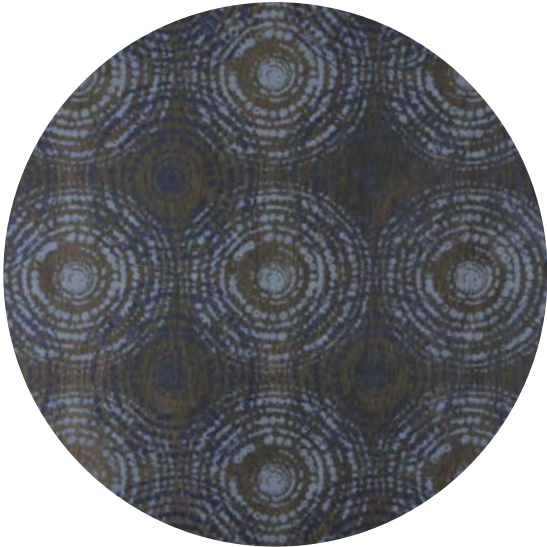
**SMALL**  
20360 48 × 48 × 4 CM  
19" × 19" × 1,6"



TRIBAL QUEST COLLECTION

BLUE MIST ORGANIC  
GLASS TRAY

**SMALL**  
20371 48 × 48 × 4 CM  
19" × 19" × 1,6"



SEASIDE BEADS  
DRIFTWOOD TRAY

**LARGE**  
20374 61 × 61 × 4 CM  
24" × 24" × 1,6"







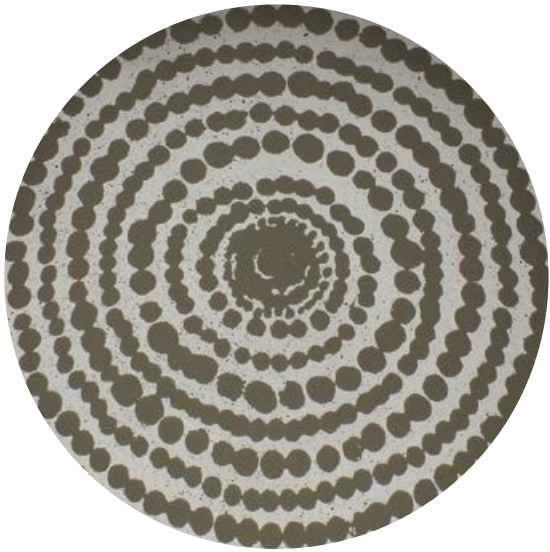
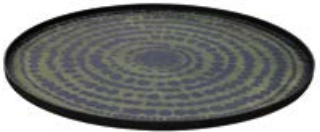
BLACK BEADS  
DRIFTWOOD TRAY

**SMALL**  
20370 48 × 48 × 4 CM  
19" × 19" × 1,6"



MIDNIGHT BEADS  
DRIFTWOOD TRAY

**XL**  
20449 92 × 92 × 4 CM  
36" × 36" × 1,6"



GOLD BEADS  
MIST AGED MIRROR TRAY

**LARGE**  
20373 61 × 61 × 4 CM  
24" × 24" × 1,6"



GOLD MULTI BEADS  
MIST AGED MIRROR TRAY

**LARGE**  
20376 61 × 46 × 5 CM  
24" × 18" × 2"





## BEADED DETAIL

MIST AGED MIRROR TRAY

**SMALL**  
20375 46 × 36 × 4 CM  
18" × 14" × 1,6"



## BIRDS OF PARADISE

GLASS TRAY

**LARGE**  
20345 61 × 61 × 4 CM  
24" × 24" × 1,6"



## OCEAN BLUE COLLECTION

### UMBRELLAS

GLASS TRAY

**SMALL**  
20340 48 × 48 × 4 CM  
19" × 19" × 1,6"



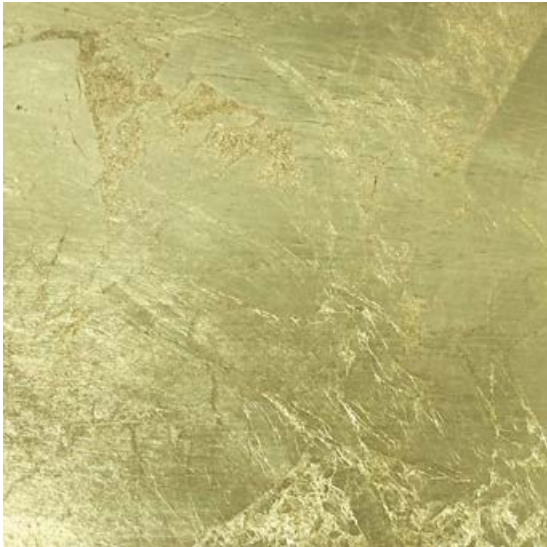
### TRIBAL HEXAGON

GLASS TRAY

**SMALL**  
20341 48 × 48 × 4 CM  
19" × 19" × 1,6"







VALET TRAYS

GOLD LEAF

GLASS TRAY - METAL RIM

20386 16 × 16 × 3 CM  
6" × 6" × 1"



20387 31 × 17 × 3 CM  
12" × 7" × 1"



20388 46 × 18 × 3 CM  
18" × 7" × 1"



FOSSIL ORGANIC

GLASS TRAY - METAL RIM

20383 16 × 16 × 3 CM  
6" × 6" × 1"



20384 31 × 17 × 3 CM  
12" × 7" × 1"



20385 46 × 18 × 3 CM  
18" × 7" × 1"



CHARCOAL

HEAVY AGED MIRROR TRAY - METAL RIM

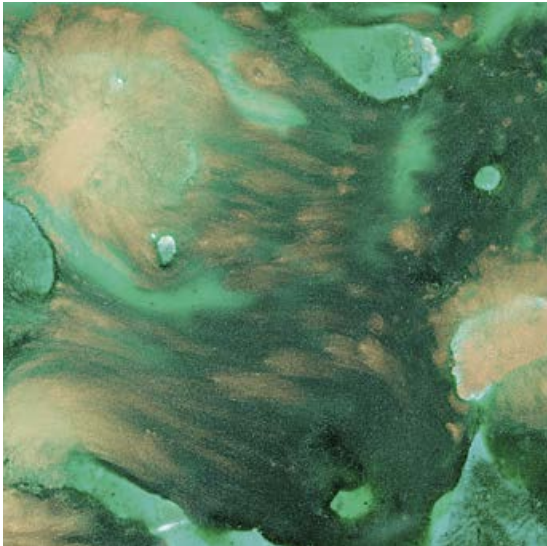
20523 16 × 16 × 3 CM  
6" × 6" × 1"



20524 31 × 17 × 3 CM  
12" × 7" × 1"



20525 46 × 18 × 3 CM  
18" × 7" × 1"



MALACHITE ORGANIC

GLASS TRAY - METAL RIM

20380 16 × 16 × 3 CM  
6" × 6" × 1"

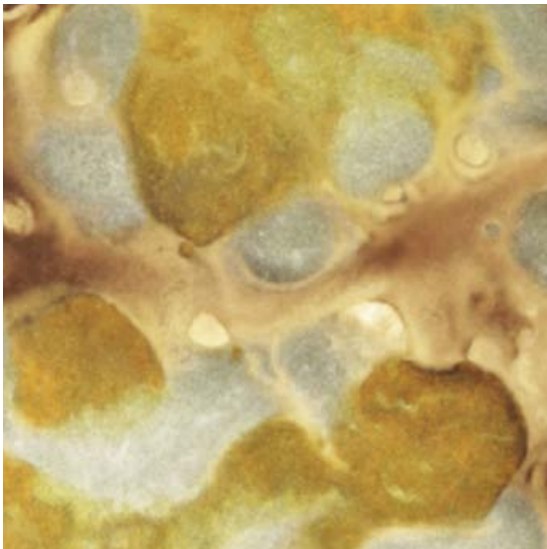


20381 31 × 17 × 3 CM  
12" × 7" × 1"



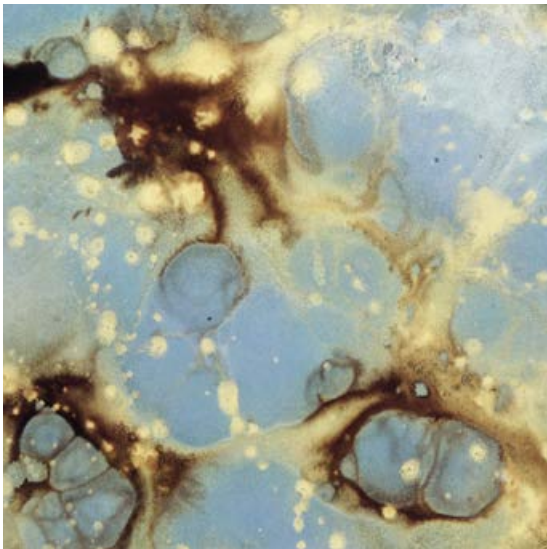
20382 46 × 18 × 3 CM  
18" × 7" × 1"





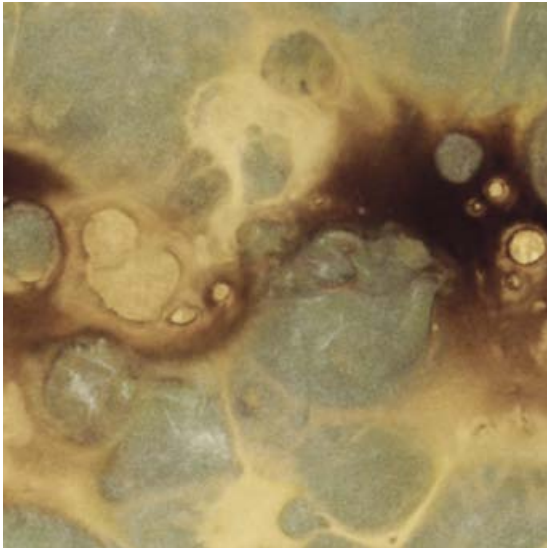
YELLOW ORGANIC  
GLASS TRAY - METAL RIM

20538 19 × 16 × 3 CM  
7" × 6" × 1"



TEAL ORGANIC  
GLASS TRAY - METAL RIM

20540 29 × 26 × 3 CM  
11" × 10" × 1"



MOSS ORGANIC  
GLASS TRAY - METAL RIM

20539 23 × 20 × 3 CM  
9" × 8" × 1"



GEO STUDY  
DRIFTWOOD TRAY - WOODEN RIM

20930 23 × 23 × 3 CM  
9" × 9" × 1"







GRAPHITE CHEVRON  
DRIFTWOOD TRAY - WOODEN RIM

20931 30 × 30 × 3 CM  
12" × 12" × 1"



MIDNIGHT LINEAR CIRCLES  
GLASS TRAY - WOODEN RIM

20526 20 × 20 × 3 CM  
8" × 8" × 1"



GOLD LINEAR CIRCLES  
GLASS TRAY - WOODEN RIM

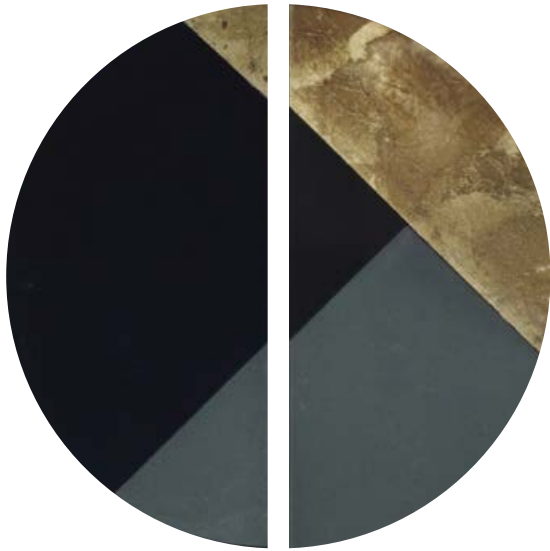
20527 23 × 23 × 3 CM  
9" × 9" × 1"



MIDNIGHT RASPBERRY ORGANIC  
GLASS TRAY - WOODEN RIM

20528 30 × 30 × 3 CM  
12" × 12" × 1"





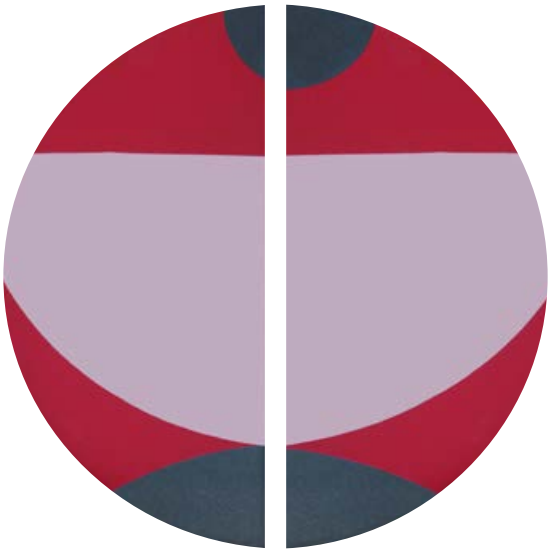
GEOMETRIC HALF-MOON  
GLASS TRAY - METAL RIM

20541 15 × 30 × 3 CM  
6" × 12" × 1"



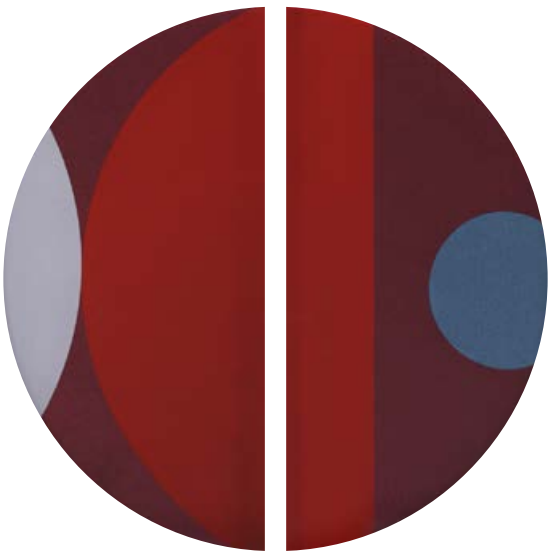
CHEVRON HALF-MOON  
GLASS TRAY - METAL RIM

20542 15 × 30 × 3 CM  
6" × 12" × 1"



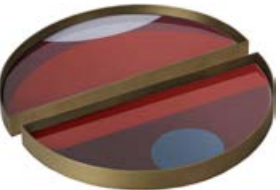
BLUSH CURVE  
GLASS TRAY - METAL RIM

20941 15 × 30 × 3 CM  
6" × 12" × 1"



GARNET CURVE  
GLASS TRAY - METAL RIM

20942 15 × 30 × 3 CM  
6" × 12" × 1"





Perfect Combination

Create a table that is uniquely yours by choosing one of our favorite tray combinations or by selecting your own matching pair of trays.

SMALL & LARGE TRAYS



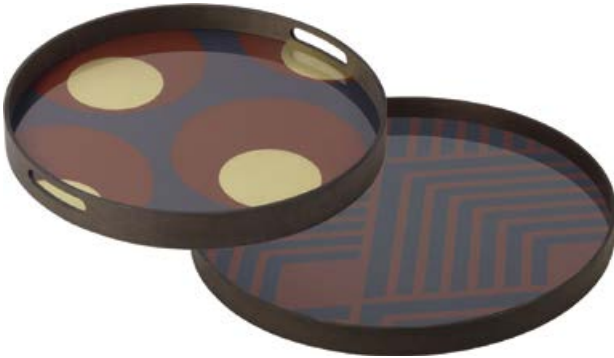
20932 GRAPHITE CHEVRON  
20936 FOLK



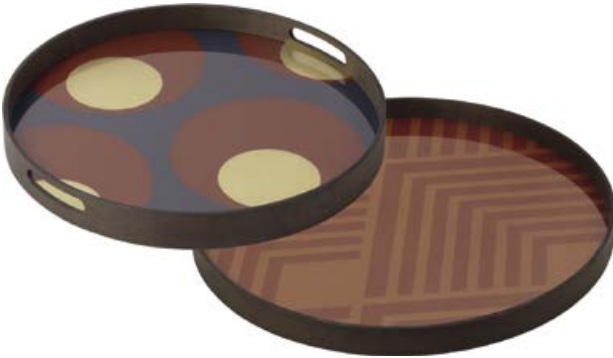
20437 PINOT LAYERED DOTS  
20439 OVERLAPPING DOTS



20438 CONNECTED DOTS  
20440 SLATE LAYERED DOTS



20933 TURKISH DOTS  
20934 MIDNIGHT CHEVRON



20933 TURKISH DOTS  
20935 ORANGE CHEVRON



20305 WHITE SLICE  
20303 WHITE TREE



20360 INDIGO ORGANIC  
20404 BLACK TREE



20458 GRAPHITE BOHEMIAN  
20460 DARK BOHEMIAN



20459 SAND WABI SABI  
20461 SLATE WABI SABI



20402 SLICE  
20407 BRONZE SLICE



20450 HEAVY AGED CHARCOAL MIRROR  
20436 BLACK MARRAKESH





20370 BLACK BEADS  
20436 BLACK MARRAKESH



20361 MIST GOLD ORGANIC  
20373 GOLD BEADS



20340 UMBRELLAS  
20345 BIRDS OF PARADISE



20341 TRIBAL HEXAGON  
20345 BIRDS OF PARADISE



20335 BLOSSOM  
20336 WHITE MARRAKESH



20301 HEAVY AGED MIRROR  
20310 MOROCCAN FROST



20451 RASPBERRY ABSTRACT  
20453 RASPBERRY LANDSCAPE



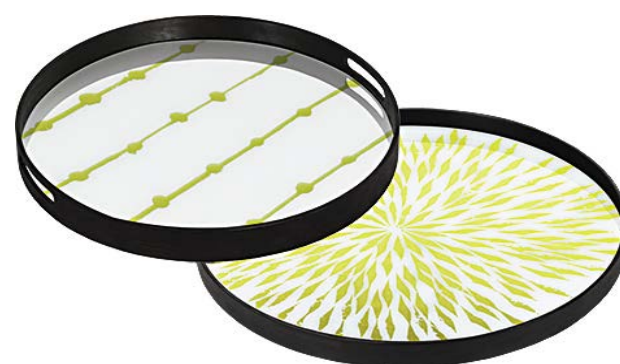
20452 TURQUOISE ABSTRACT  
20453 RASPBERRY LANDSCAPE



20403 HEAVY AGED BRONZE MIRROR  
20315 HEAVY AGED MIRROR



20371 BLUE MIST ORGANIC  
20374 SEASIDE BEADS



20417 GOLD DOTS  
20421 DAHLIA



20418 BROWN DOTS  
20407 BRONZE SLICE



LARGE & XL TRAYS



20936 FOLK  
20937 ASYMMETRIC DOT



20461 SLATE WABI SABI  
20462 GRAPHITE WABI SABI



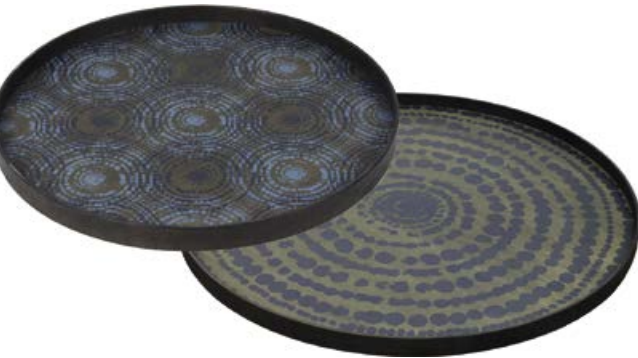
20303 WHITE TREE  
20378 WHITE SLICE



20315 HEAVY AGED MIRROR  
20331 HEAVY AGED BRONZE MIRROR

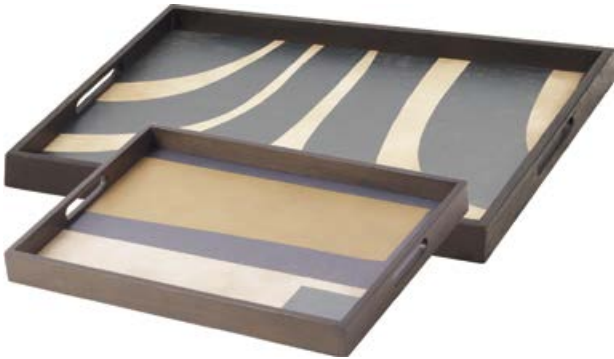


20404 BLACK TREE  
20379 BLACK SLICE



20374 SEASIDE BEADS  
20449 MIDNIGHT BEADS

SMALL & LARGE TRAYS



20938 GEO STUDY  
20940 SLATE CURVES



20463 SAND WABI SABI  
20464 GRAPHITE WABI SABI



20316 HEAVY AGED BRONZE MIRROR  
20317 HEAVY AGED BRONZE MIRROR



20422 DOTTED LINE  
20424 GOLD AND BLUE HALOS



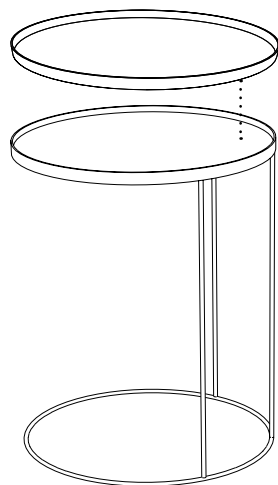
20375 BEADED DETAIL  
20376 GOLD MULTI BEADS



20441 SILVER DOTS  
20443 SIENNA LAYERED DOTS

ROUND

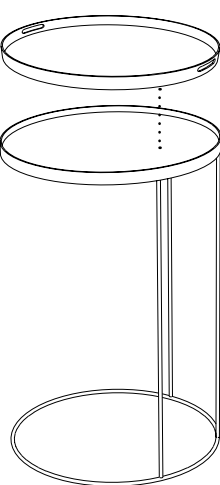
LARGE TRAY



TRAY SIDE TABLE

20339 62 × 62 × 66 CM  
24" × 24" × 26"

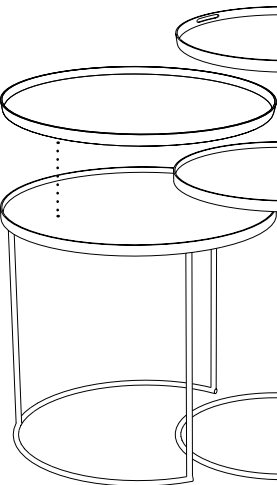
SMALL TRAY



TRAY SIDE TABLE

20704 49 × 49 × 66 CM  
19" × 19" × 26"

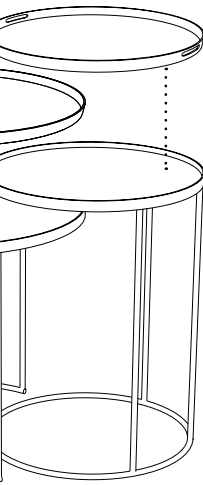
LARGE TRAY



TRAY SIDE TABLE SET

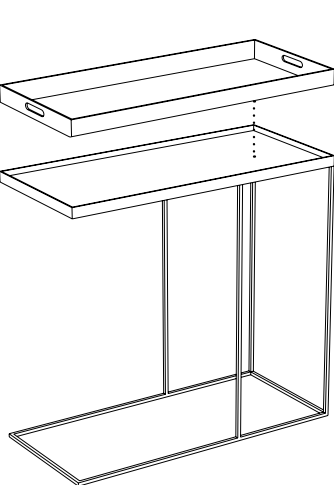
20721 49 × 49 × 66 CM - 62 × 62 × 57 CM  
19" × 19" × 26" - 24" × 24" × 22"

SMALL TRAY



RECTANGLE

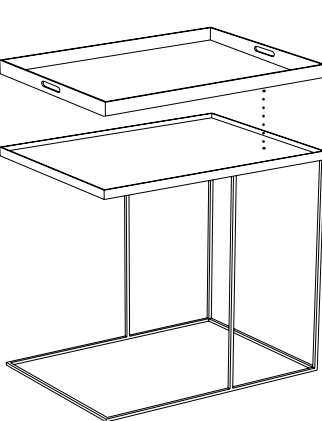
MEDIUM TRAY



TRAY SIDE TABLE

20706 70 × 32 × 64 CM  
28" × 13" × 25"

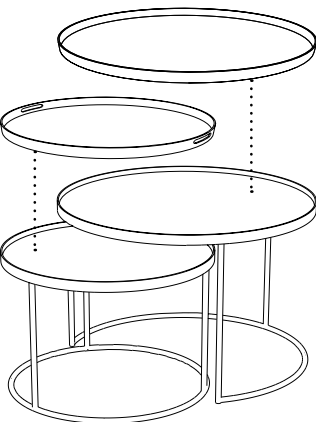
LARGE TRAY



TRAY SIDE TABLE

20720 62 × 47 × 64 CM  
24" × 19" × 25"

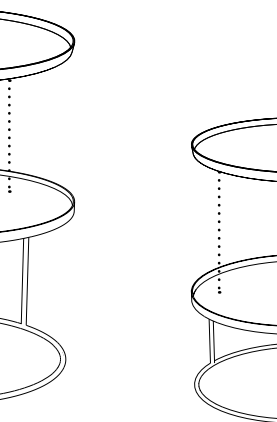
SMALL TRAY



TRAY COFFEE TABLE SET

20726 49 × 49 × 31 CM - 62 × 62 × 38 CM  
19" × 19" × 12" - 24" × 24" × 15"

LARGE TRAY



TRAY COFFEE TABLE SET

20329 62 × 62 × 31 CM - 93 × 93 × 38 CM  
24" × 24" × 12" - 37" × 37" × 15"

XL TRAY



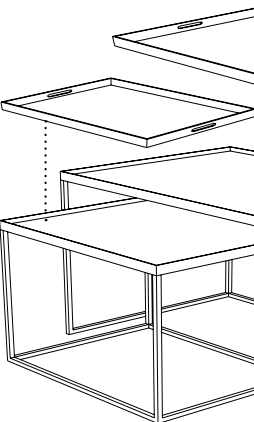
TRAY COFFEE TABLE SET

20328 93 × 93 × 38 CM  
37" × 37" × 15"

XL TRAY



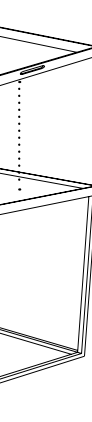
SMALL TRAY



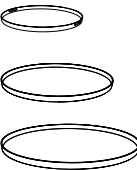
TRAY COFFEE TABLE SET

20725 47 × 37 × 31 CM - 62 × 47 × 38 CM  
19" × 15" × 12" - 24" × 19" × 15"

LARGE TRAY



ROUND TRAYS



small tray

48 × 38 × 4 CM  
19" × 19" × 1,6"



large tray

61 × 61 × 4 CM  
24" × 24" × 1,6"



xl tray

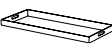
92 × 92 × 4 CM  
36" × 36" × 1,6"

RECTANGLE TRAYS



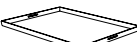
small tray

46 × 36 × 4 CM  
18" × 14" × 1,6"



medium tray

69 × 31 × 5 CM  
27" × 12" × 2"



large tray

61 × 46 × 5 CM  
24" × 18" × 2"





TRAY SIDE TABLES

\*trays to be ordered separately

ROUND TRAY TABLE

BLACK METAL FRAME

20704	49 × 49 × 66 CM 19" × 19" × 26"
20339	62 × 62 × 66 CM 24" × 24" × 16"

ROUND TRAY TABLE SET

BLACK METAL FRAME

20721	49 × 49 × 66 CM - 62 × 62 × 57 CM 19" × 19" × 26" - 24" × 24" × 22"
-------	--



RECTANGLE TRAY TABLE

BLACK METAL FRAME

20706	70 × 32 × 64 CM 28" × 13" × 25"
20720	62 × 47 × 64 CM 24" × 19" × 25"



TRAY COFFEE TABLES

\*trays to be ordered separately

ROUND TRAY TABLE

BLACK METAL FRAME

20328 93 × 93 × 38 CM  
37" × 37" × 15"

ROUND TRAY TABLE SET

BLACK METAL FRAME

20726 49 × 49 × 31 CM - 62 × 62 × 38 CM  
19" × 19" × 12" - 24" × 24" × 15"  
20329 62 × 62 × 31 CM - 93 × 93 × 38 CM  
24" × 24" × 12" - 37" × 37" × 15"



RECTANGLE TRAY TABLE SET

BLACK METAL FRAME

20725 47 × 37 × 31 CM - 62 × 47 × 38 CM  
19" × 15" × 12" - 24" × 19" × 15"



Side Tables



GEOMETRIC SIDE TABLE

OAK 100%  
50537 51 × 51 × 50 cm  
20" × 20" × 20"



OAK BLACK 100%  
50536 51 × 51 × 50 cm  
20" × 20" × 20"



TEAK BROWN 100% NEW  
10196 51 × 51 × 50 cm  
20" × 20" × 20"



COVE SIDE TABLE  
TEAK BLACK 100% NEW  
10190 50 × 50 × 50 cm  
20" × 20" × 20"



FIN SIDE TABLE  
TEAK BLACK 100% NEW  
10193 50 × 50 × 50 cm  
20" × 20" × 20"



ARC SIDE TABLE  
BLACK METAL LEGS  
TEAK BLACK 100% NEW  
10199 50 × 50 × 47 cm  
20" × 20" × 19"



BAU SIDE TABLE  
BLACK METAL LEGS  
  
TEAK BLACK ● 100% **NEW**  
10200 53 × 53 × 47 CM  
20" × 20" × 19"



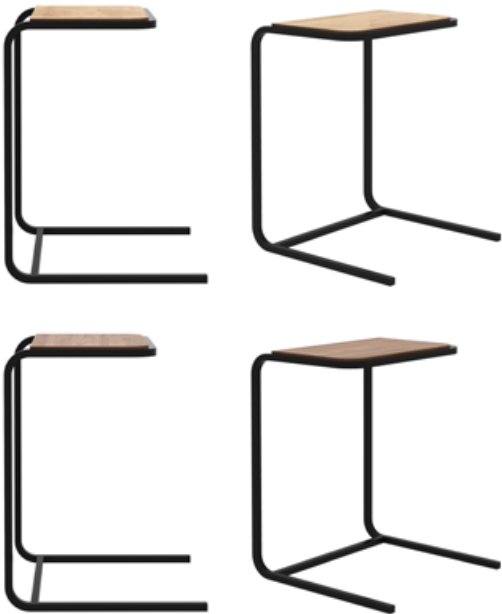
OBLIC SIDE TABLE  
  
TEAK BLACK ● 100% **NEW**  
10185 52 × 52 × 49 CM  
20" × 20" × 19"



COMPACT SIDE TABLE  
BLACK METAL FRAME, MIRROR TOP  
  
CHARCOAL ●  
20760 30 × 30 × 60 CM  
12" × 12" × 24"  
20762 40 × 40 × 60 CM  
16" × 16" × 24"  
20764 40 × 40 × 90 CM  
16" × 16" × 35"



TABWA SIDE TABLE  
BLACK METAL LEGS  
  
TEAK DARK ● 100%  
12217 58 × 58 × 62 CM  
23" × 23" × 24"  
12218 65 × 65 × 52 CM  
26" × 26" × 20"  
12219 83 × 83 × 44 CM  
33" × 33" × 17"



N701 SIDE TABLE  
BLACK METAL FRAME  
  
OAK ● 100% **NEW**  
50121 40 × 40 × 53 CM  
16" × 16" × 21"  
  
TEAK ● FSC® 100%  
10125 40 × 40 × 53 CM  
16" × 16" × 21"





TRIPOD SIDE TABLE

- OAK ● 100%
- 50508 46 × 46 × 56 cm  
18" × 18" × 22"
- 50509 70 × 70 × 60 cm  
28" × 28" × 24"



- OAK BLACK ● 100%
- 50527 46 × 46 × 56 cm  
18" × 18" × 22"
- 50528 70 × 70 × 60 cm  
28" × 28" × 24"



- TEAK ● FSC® 100%
- 14212 46 × 46 × 56 cm  
18" × 18" × 22"



- WALNUT ● 100%
- 44212 46 × 46 × 56 cm  
18" × 18" × 22"



MIKADO SIDE TABLE

- OAK ● 100%
- 50541 50 × 50 × 50 cm  
20" × 20" × 20"



BOK SIDE TABLE

- OAK ● 100%
- 51501 43 × 43 × 50 cm  
17" × 17" × 20"

- OAK BLACK ● 100%
- 51510 43 × 43 × 50 cm  
17" × 17" × 20"



TWIST SIDE TABLE

- OAK ● 100%
- 50556 41 × 41 × 41 cm  
16" × 16" × 16"
- 50557 46 × 46 × 46 cm  
18" × 18" × 18"
- 50558 51 × 51 × 51 cm  
20" × 20" × 20"



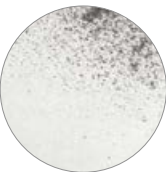
NESTING SIDE TABLES

NESTING SIDE TABLE SET OF 2  
HEAVY AGED MIRROR TOP, BLACK METAL FRAME

BRONZE COPPER ●  
20702 43 × 43 × 56 CM - 17" × 17" × 22"  
56 × 56 × 69 CM - 22" × 22" × 27"



CLEAR ●  
20723 43 × 43 × 56 CM - 17" × 17" × 22"  
56 × 56 × 69 CM - 22" × 22" × 27"



CHARCOAL ●  
20703 43 × 43 × 56 CM - 17" × 17" × 22"  
56 × 56 × 69 CM - 22" × 22" × 27"



HEXAGON SIDE TABLE SET OF 2  
COBALT MIST ORGANIC GLASS TOP, BLACK METAL FRAME

20727 54 × 46 × 48 CM - 21" × 18" × 19"  
66 × 57 × 54 CM - 26" × 22" × 21"



MONOLIT SIDE TABLE S  
METAL FRAME, REMOVABLE COVER

OAK ● 100%  
BLACK METAL  
26865 48 × 48 × 51 CM  
19" × 19" × 20"

OAK ● 100%  
WHITE METAL  
26858 48 × 48 × 51 CM  
19" × 19" × 20"

RISE SIDE TABLE  
BLACK METAL LEGS

OAK ● 100%  
50134 50 × 30 × 55 CM  
20" × 12" × 22"

WIRELESS CHARGING  
EU 50140 - UK 50157 - US 50156





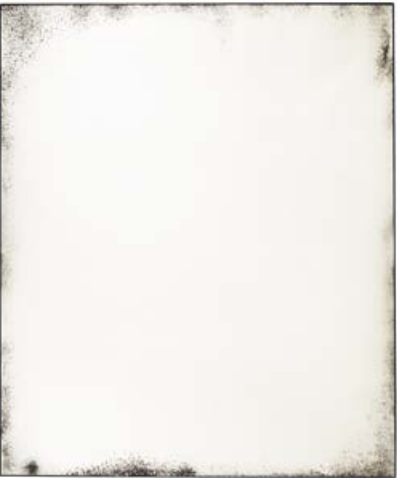
AGED MIRRORS

RECTANGLE MIRROR  
METAL FRAME

BRONZE HEAVY AGED ●

**FLOOR**  
20661    71 × 3 × 244 CM  
          28" × 1" × 96"

**WALL**  
20660    122 × 3 × 153 CM  
          48" × 1" × 60"



RECTANGLE MIRROR  
METAL FRAME

CLEAR MEDIUM AGED ●

**FLOOR**  
20663    71 × 3 × 244 CM  
          28" × 1" × 96"

**WALL**  
20662    122 × 3 × 153 CM  
          48" × 1" × 60"



FRAMELESS MIRROR **NEW**  
BRASS PLATED CLIPS

BRONZE MEDIUM AGED ●

**FLOOR**  
20671 62 × 3 × 194 CM  
24" × 1" × 76"

**WALL**  
20670 62 × 3 × 62 CM  
24" × 1" × 24"



FRAMELESS MIRROR **NEW**  
BRASS PLATED CLIPS

CLEAR MEDIUM AGED ●

**FLOOR**  
20673 62 × 3 × 194 CM  
24" × 1" × 76"

**WALL**  
20672 62 × 3 × 62 CM  
24" × 1" × 24"







ROUND MIRROR  
WOODEN FRAME

BRONZE HEAVY AGED ●

- 20602 48 × 3 × 48 CM  
19" × 1" × 19"
- 20603 61 × 3 × 61 CM  
24" × 1" × 24"
- 20605 92 × 3 × 92 CM  
36" × 1" × 36"



CLEAR MEDIUM AGED ●

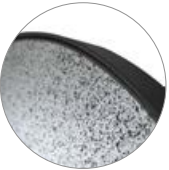
- 20600 48 × 3 × 48 CM  
19" × 1" × 19"
- 20601 61 × 3 × 61 CM  
24" × 1" × 24"
- 20604 92 × 3 × 92 CM  
36" × 1" × 36"



GATE MIRROR **NEW**  
METAL FRAME

CLEAR MEDIUM AGED ●

- FLOOR**
- 20607 80 × 3 × 200 CM  
31" × 1" × 79"





PLAIN MIRRORS

LIGHT FRAME MIRROR

OAK ● ⑩ 100%  
51299 90 × 5 × 200 CM  
35" x 2" x 79"



GOLD LEAF BRONZE MIRROR  
WOODEN FRAME

WALL  
20606 88 × 4 × 88 CM  
35" × 2" × 35"

LAYERS ROUND MIRROR

OAK ● ⑩  
58164 91 × 4 × 91 CM  
36" × 2" × 36"  
58165 121 × 4 × 121 CM  
48" x 2 x 48"





SHELVES

UTILITILE HOOKED

OAK 100%  
55097 40 × 4 × 40 CM  
16" × 2" × 16"

TEAK 100%  
15097 40 × 4 × 40 CM  
16" × 2" × 16"

RIBBON SHELF

OAK 100%  
BLACK METAL  
26623 70 × 20 × 17 CM  
28" × 8" × 7"

OAK 100%  
WHITE METAL  
26616 70 × 20 × 17 CM  
28" × 8" × 7"



WALL SHELF

OAK  
51358 70 × 22 × 5 CM  
28" × 9" × 2"  
51359 140 × 22 × 5 CM  
55" × 9" × 2"  
51360 210 × 22 × 5 CM  
83" × 9" × 2"

U SHELF

OAK 100%  
BLACK METAL  
26193 40 × 30 × 30 CM  
16" × 12" × 12"  
26202 55 × 20 × 20 CM  
22" × 8" × 8"  
26211 70 × 15 × 15 CM  
28" × 6" × 6"

OAK 100%  
WHITE METAL  
26186 40 × 30 × 30 CM  
16" × 12" × 12"  
26194 55 × 20 × 20 CM  
22" × 8" × 8"  
26204 70 × 15 × 15 CM  
28" × 6" × 6"

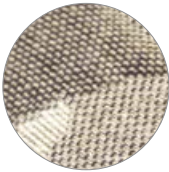


REFINED LAYERS COLLECTION

CONNECTED DOTS

80% COTTON - 14% POLYACRYL -  
3% VISCOSE - 3% POLYESTER

21025 50 × 50 CM  
20" × 20"



LAYERED DOTS

80% COTTON - 14% POLYACRYL -  
3% VISCOSE - 3% POLYESTER

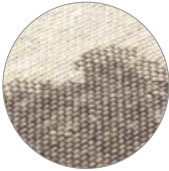
21026 50 × 50 CM  
20" × 20"



ABSTRACT DETAIL

80% COTTON - 14% POLYACRYL -  
3% VISCOSE - 3% POLYESTER

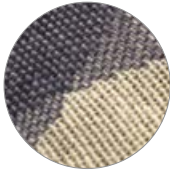
21028 60 × 40 CM  
24" × 16"



CONNECTED DOTS

80% COTTON - 14% POLYACRYL -  
3% VISCOSE - 3% POLYESTER

21029 60 × 40 CM  
24" × 16"

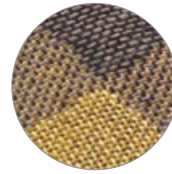






OVERLAPPING DOTS  
80% COTTON - 14% POLYACRYL -  
3% VISCOSE - 3% POLYESTER

21027 50 x 50 CM  
20" x 20"



*Our cushion covers come with a 100% duck feather insert, carefully selected to obtain the best comfort and look.*



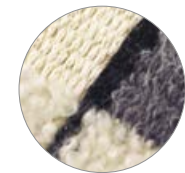
URBAN  
45% POLYACRYL - 19% WOOL - 17% POLYESTER -  
17% COTTON - 1% ALPACA - 1% POLYAMIDE

21034 50 x 50 CM  
20" x 20"



URBAN  
45% POLYACRYL - 19% WOOL -  
17% POLYESTER - 17% COTTON -  
1% ALPACA - 1% POLYAMIDE

21035 60 x 40 CM  
24" x 16"

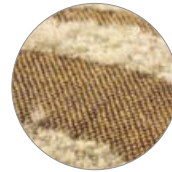




### AVANA ORB

38% POLYACRYL - 33% COTTON - 15% WOOL -  
13% POLYESTER - 1% VISCOSE

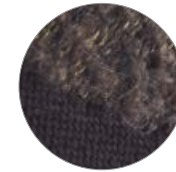
21030 45 × 45 CM  
18" × 18"



### MORO ORB

38% POLYACRYL - 33% COTTON - 15% WOOL -  
13% POLYESTER - 1% VISCOSE

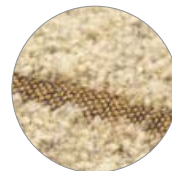
21031 45 × 45 CM  
18" × 18"



### AVANA ABSTRACT

38% POLYACRYL - 33% COTTON - 15% WOOL -  
13% POLYESTER - 1% VISCOSE

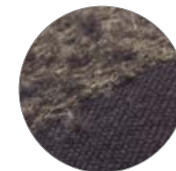
21032 60 × 40 CM  
24" × 16"



### MORO ABSTRACT

38% POLYACRYL - 33% COTTON - 15% WOOL -  
13% POLYESTER - 1% VISCOSE

21033 60 × 40 CM  
24" × 16"







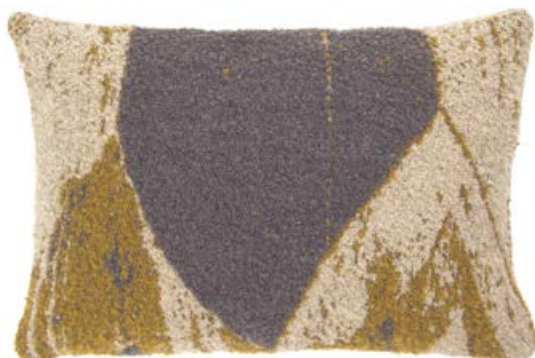
AVANA CHEVRON  
51% POLYACRYL - 21% WOOL -  
18% POLYESTER - 10% COTTON

21036 50 × 50 CM  
20" × 20"



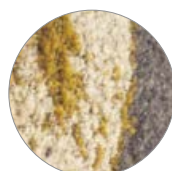
NERO CHEVRON  
51% POLYACRYL - 21% WOOL -  
18% POLYESTER - 10% COTTON

21037 50 × 50 CM  
20" × 20"



AVANA CHEVRON  
51% POLYACRYL - 21% WOOL -  
18% POLYESTER - 10% COTTON

21038 60 × 40 CM  
24" × 16"



NERO CHEVRON  
51% POLYACRYL - 21% WOOL -  
18% POLYESTER - 10% COTTON

21039 60 × 40 CM  
24" × 16"





OAT NOMAD  
52% COTTON - 32% LINEN -  
11% VISCOSE - 5% POLYAMIDE

21052 60 × 40 CM  
24" × 16"



BLUE NOMAD  
52% COTTON - 32% LINEN -  
11% VISCOSE - 5% POLYAMIDE

21045 60 × 40 CM  
24" × 16"



SILVER NOMAD  
52% COTTON - 32% LINEN -  
11% VISCOSE - 5% POLYAMIDE

21044 60 × 40 CM  
24" × 16"



CAMEL NOMAD  
52% COTTON - 32% LINEN -  
11% VISCOSE - 5% POLYAMIDE

21046 60 × 40 CM  
24" × 16"



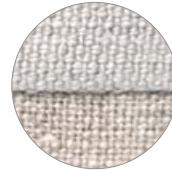




OAT LIN SAUVAGE **NEW**

100% LINEN

21053 60 × 60 CM  
24" × 24"



BLUE LIN SAUVAGE **NEW**

100% LINEN

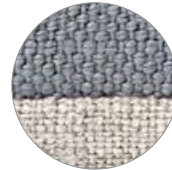
21055 60 × 60 CM  
24" × 24"



SILVER LIN SAUVAGE **NEW**

100% LINEN

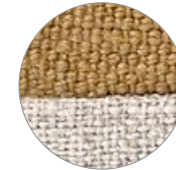
21054 60 × 60 CM  
24" × 24"



CAMEL LIN SAUVAGE **NEW**

100% LINEN

21056 60 × 60 CM  
24" × 24"





OAT NOMAD  
52% COTTON - 32% LINEN -  
11% VISCOSE - 5% POLYAMIDE

21051 140 × 200 CM  
55" × 79"



BLUE NOMAD  
52% COTTON - 32% LINEN -  
11% VISCOSE - 5% POLYAMIDE

21049 140 × 200 CM  
55" × 79"



SILVER NOMAD  
52% COTTON - 32% LINEN -  
11% VISCOSE - 5% POLYAMIDE

21048 140 × 200 CM  
55" × 79"



CAMEL NOMAD  
52% COTTON - 32% LINEN -  
11% VISCOSE - 5% POLYAMIDE

21050 140 × 200 CM  
55" × 79"



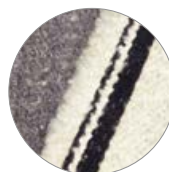




### URBAN THROW

44% POLYACRYL - 22% WOOL - 8% POLYESTER, 16%  
COTTON - 5% ALPACA - 5% POLYAMIDE

21047 140 × 195 CM  
55" × 77"



# HOW TO TAKE CARE OF OUR PRODUCTS

## About natural materials

The beauty of natural materials lies in its peculiarities and imperfections. That is what separates true beauty from the artificial. Variations in wood grain and color, knots, medullary rays and other natural characteristics are inherent in solid wood. These are far from flaws, but an intricate part of its character. Natural stone can have minor pitting or surface fissures. We believe that these imperfections contribute to the charm of Ethnicraft products.

Wood, like any other natural and porous material, continues to absorb and release humidity throughout its life. Although Ethnicraft designs furniture that adapts well to the hydrometrical conditions of its environment, some cracking or movement may occur. Please do not be alarmed, this is a normal response to the furniture’s environment.

### UNIQUENESS OF OUR PRODUCT

The Ethnicraft brand incorporates classic and traditional techniques, such as metal-leafing, hand-painting, silk screen-printing and aging. Due to the handcrafted nature of our products, each item will vary slightly. We consider this a sign of uniqueness and quality.

*Wood is a product of nature.  
We believe that their imperfections  
contribute to the charm  
of our creations.*

## Tips & tricks

- All Ethnicraft products are intended for indoor use only.
- Recommended humidity in the room: between 40% and 60%.
- Ideal room temperature: 21°C/70°F during the day, not below 14°C/57°F at night.
- To prevent color differences: Do not place your furniture in direct sunlight, move objects placed on the furniture from time to time and open your extendable table on a regular basis.
- Avoid exposure to extreme conditions: do not place furniture near heating sources or air-conditioned spaces.
- To prevent staining we recommend that any spills are removed immediately.
- When cleaning the surface, always work in the direction of the wood grain.
- Use place mats to prevent hot pots and pans, or cold glasses and bottles, from leaving marks on the furniture.
- Do not drag the furniture along the floor, always lift the furniture when moving.
- Always ensure water and solutions used to clean the floor do not come into contact with the furniture’s base, as it might leave permanent marks.
- Last but not least, we recommend to carefully read the care instructions.
- The Ethnicraft trays are intended for decorative and everyday use. They are not to be used in a setting such as, but not limited to, restaurants where they are exposed to constant washing, repetitive handling and service of heavy items.

### SPOT CLEANING HOME TEXTILES

- Treat stains immediately.
- Blot up as much of the spill as possible with a clean, dry, white cloth. Don’t rub.
- Blot up the stain with a clean, slightly damp white cloth, working from the outer edge to the center of the stain.
- Use a hair dryer on the lowest heat setting to evenly dry the fabric and prevent moisture rings.

## Oak furniture

### OILED

Most of the Ethnicraft oak furniture is finished with a pigmented hardwax oil. This finish gives the furniture its desired natural color and forms a natural protective coating that acts as a repellent against most common substances and liquids, but is no foolproof guarantee against stains. In case of a spill, remove it immediately.

### REGULAR CARE

- For regular dusting, use a dry cloth. For cleaning or in case of a spill, use a damp cloth and natural soap. Wipe in the direction of the grain. Do not use soap containing detergent or other chemicals. Dry with a soft clean cloth to prevent spotting.

### REFRESHING THE SURFACE

- To refresh your furniture or to remove superficial stains (crayons or pencil marks, wine or fruit juice stains, etc.) we recommend Osmo Liquid Wax Cleaner (3029). This product cleans and regenerates the elegant character of the wood and slightly reinforces the original protective coating. Osmo Liquid Wax Cleaner is no guarantee against stains.

### THOROUGH CARE

- As time goes by, the original hardwax coating may need to be renewed. We recommend using Osmo Hardwax Oil Natural (3041). In case of discoloration, stubborn stains or to remove a superficial scratch, we advise to sand the surface first. Make sure the surface is clean and dry before applying the Hardwax Oil. It is important to spread the product evenly over the surface and remove excess product immediately after application to avoid spots after drying.

### VARNISHED

Our black oak furniture, and a selection of our natural oak items, are varnished instead of oiled. You will find varnished items clearly indicated in this catalog. Varnish offers a good protection against stains. Even with this preventative and extensive treatment, spills should be removed immediately.

### REGULAR CARE

- For regular dusting, use a dry cloth. For cleaning or in case of a spill, use a damp cloth and natural soap. Wipe in the direction of the grain. Do not use soap containing detergent or other chemicals. Dry with a soft clean cloth to prevent spotting.



# HOW TO TAKE CARE OF OUR PRODUCTS

## Teak furniture

### NATURAL

Our teak range comes without any finish or protective treatment. The wood is merely polished, allowing the natural oils to rise to the surface. The high density of teak wood has the advantage that stains stay on the surface and do not penetrate the wood easily. Even with these characteristics, spills should be removed immediately.

#### PREVENTIVE TREATMENT

- If you want to protect the wood from the start, apply a protective coating. We recommend Occulto Oil (9911). This seals the pores of the timber and creates a natural protection. Stains and marks should still be removed immediately.

#### REGULAR CARE

- For regular dusting, use a dry cloth. For cleaning or in case of a spill, use a damp cloth and natural soap. Wipe in the direction of the grain. Do not use soap containing detergent or other chemicals. Dry with a soft clean cloth to prevent spotting.

#### THOROUGH CARE

- To remove stubborn stains or superficial scratches, extra fine sand paper can be used. Make sure you always rub in the direction of the wood grain.

#### VARNISHED

- Part of the teak furniture items are varnished. You will find varnished items clearly indicated in this catalog. Varnish offers a good protection against stains. Even with this preventive and extensive treatment, spills should be removed immediately.

#### REGULAR CARE

- For regular dusting, use a dry cloth. For cleaning or in case of a spill, use a damp cloth and natural soap. Wipe in the direction of the grain. Do not use soap containing detergent or other chemicals. Dry with a soft clean cloth to prevent spotting.

### VARNISHED AND WAXED

The carved parts of our Ancestors Tabwa collection are varnished but to achieve its signature shine a wax is applied. Even with this preventive and extensive treatment, spills should be removed immediately.

#### REGULAR CARE

- For regular dusting, use a dry cloth. For cleaning or in case of a spill, use a damp cloth and natural soap. Do not use soap containing detergent or other chemicals. Dry with a soft clean cloth to prevent spotting.

#### REFRESHING THE SURFACE

- Dust the surface first. Apply dark brown liquid beeswax using a soft cloth or a furniture brush. Allow the beeswax to dry. Buff with a clean soft cloth and/or furniture brush. Repeat until desired level of shine is reached.

## Walnut furniture

### OILED

All Ethnicraft walnut furniture is finished with a tinted natural oil. This finish gives the furniture its desired natural color and forms a natural protective coating that acts as a repellent against most common substances and liquids, but is no foolproof guarantee against stains. In case of a spill, remove it immediately.

#### REGULAR CARE

- For regular dusting, use a dry cloth. For cleaning or in case of a spill, use a damp cloth and natural soap. Wipe in the direction of the grain. Do not use soap containing detergent or other chemicals. Dry with a soft clean cloth to prevent spotting.

#### REFRESHING THE SURFACE

- To refresh your furniture or to remove superficial stains (crayons or pencil marks, wine or fruit juice stains, etc.) we recommend Osmo Liquid Wax Cleaner (3029). This product cleans, regenerates the elegant character of the wood and slightly reinforces the original protective coating. Osmo Liquid Wax Cleaner is no guarantee against stains.

#### THOROUGH CARE

- As time goes by, the original hardwax coating may need to be renewed. We recommend using Osmo Hardwax Oil for Walnut (5063). In case of discoloration, stubborn stains or to remove a superficial scratch, we advise to sand the surface first. Make sure the surface is clean and dry before applying the Hardwax Oil. It is important to spread the product evenly over the surface and remove excess product immediately after application to avoid spots after drying.

## Metal structures

Dust regularly using a soft dry cloth. For a more thorough cleaning, use mild soap and warm water. Rinse with clean water and wipe dry. Do not use steel wool, sandpaper, mineral acid, bleach, or chlorine cleaners on metal surfaces. Always ensure water and solutions do not come into contact with the furniture's metal base and, as it might leave permanent marks on the floor. Some wood species, such as oak, contain tannin, which causes the wood to react with metal and leave permanent stains.

## Trays

### WOOD

The Ethnicraft items are varnished with a water-based topcoat to repel common substances and fluids, such as coffee, tea and wine. However, the protective coat is no foolproof guarantee against stains. In case of a spill, remove it immediately. For regular dusting, use a dry cloth. For a more thorough cleaning, use furniture polish with a soft cloth.

### GLASS & MIRROR

Wipe the glass or mirror surface with a neutral glass cleaner and soft cloth.

### METAL

Dust regularly using a soft dry cloth. For a more thorough cleaning, use mild soap and warm water. Rinse with clean water and wipe dry. Do not use steel wool, sandpaper, mineral acid, bleach, or chlorine cleaners on metal surfaces.

## Home textiles

The cushion covers and throws are not allowed to be washed, we recommend dry-cleaning only. Fluff up your cushions regularly, this will allow the down to breathe, ensuring the cushions stay light and feathery. Every few months, on a sunny, clear day, lay your pillows in the shadow outside. Fluff them up several times and turn after about an hour. The heat will dry out any slight moisture. In addition, the fresh air will give your pillows a wonderfully clean smell.





# OUR COMMITMENT

Wood has always been the core material in the Ethnicraft range. We are deeply aware of the impact of our industry on the environment and we take environmental issues to heart: the origin of the wood, the energy we use in the production and distribution process, the treatment of the products and waste reduction – we try to be as environmentally friendly as possible.

**THE ORIGIN OF OUR CORE MATERIAL**  
Ethnicraft works closely together with the Indonesian governmental body in charge of managing the teak plantations originally set up by the Dutch about 150 years ago. This government agency applies strict policies with regard to annual replanting and the size and quantity of trees that can be felled each year. Where our oak and walnut is concerned: we source oak from well-managed forests in Europe and use black American walnut for our designs.

**NO WASTE**  
Production waste such as leftover logs, wood and sawdust are re-used for other purposes. The sawdust from logs is either used as fuel for the drying ovens or compressed as a base for pellets. All the leftovers from cutting planks to size are recycled and used as base material or as box joints for panels.

*The ultimate noble and renewable material, our wood is sourced from responsibly and carefully managed forests.*

**FSC® LABEL FOR OUR FURNITURE**  
Our commitment to the environment is reflected by the FSC® CoC (Chain of Custody) certification of our distribution centers. FSC® is a worldwide independent, non-governmental, non-profit organisation that promotes responsible management of the world’s forests. In other words, this organisation guarantees that products carrying the FSC® label come from forests that are managed so that they meet the social, economic and ecological needs of present and future generations. In the case of Ethnicraft NV and Azur, the CoC certificate guarantees that the company is perfectly placed to buy, stock and sell products with a specified FSC® certificate, originating from sustainably managed forests, controlled sources and reclaimed materials, or a mixture of these. Other collections carry the FSC® 100% label, which means that these products are made from wood originating from FSC® certified plantations. These ranges are clearly indicated in the catalogue. Moreover, every effort is being made to increase the number of ranges with an FSC® label.





CREDITS

LIFESTYLE PHOTOGRAPHY

Nicolas Schimp  
Catherine De Saegher  
Addison Jones

PRODUCT PHOTOGRAPHY

Diane Hendrixx  
Thomas Ost

GRAPHICS & STYLING

Els Van Roey  
Bas Pattyn  
Nancy Reijnders

©2020 Ethnicraft

# Ethnicraft

## RETAIL

### **Ethnicraft Belgium**

Headquarters  
Scheldeweg 5  
2850 Boom  
T + 32 3 443 01 00  
F + 32 3 443 01 01  
E [info@ethnicraft.com](mailto:info@ethnicraft.com)

### **Ethnicraft France**

ZAC Euroflory  
189, Rue Gabriel Lippmann CS90009  
13131 Berre l'Etang CEDEX  
T + 33 442 152 152  
F + 33 442 152 153  
E [azur@ethnicraft.com](mailto:azur@ethnicraft.com)

### **Ethnicraft Asia**

E [info@ethnicraft-asia.com](mailto:info@ethnicraft-asia.com)

### **Ethnicraft USA**

High Point, North Carolina  
T + 1 336 821 1385  
E [info@ethnicraft-usa.com](mailto:info@ethnicraft-usa.com)

## CONTRACT, HOSPITALITY & PROJECTS

### **Studio Ethnicraft**

T + 32 3 443 01 72  
E [contract@ethnicraft.com](mailto:contract@ethnicraft.com)

### **Studio Ethnicraft USA**

High Point, North Carolina  
T + 1 917 513 0069  
E [contract@ethnicraft-usa.com](mailto:contract@ethnicraft-usa.com)

## ONLINE

[ethnicraft.com](http://ethnicraft.com)

